

## GLEBE, NSW

408/95 Ross Street

**1**  
BED

**1**  
BATH



### Deposit Taken

This 47sqm, 4th floor Apartment features:  
Studio Apartment in Harold Park

- Spacious bedroom area separated by a modern sliding partition
- Tiled living and dining area, leading to the balcony
- Contemporary kitchen with stone benchtop and Miele appliances
- Ultramodern bathroom with generous storage
- Generous balcony, perfect for entertaining
- Internal laundry with washer and dryer included
- Secure storage cage included
- Ducted A/C, video intercom and NBN connectivity
- 400m to the Heritage-listed Tramsheds, light rail station and public transport

### Deposit Taken

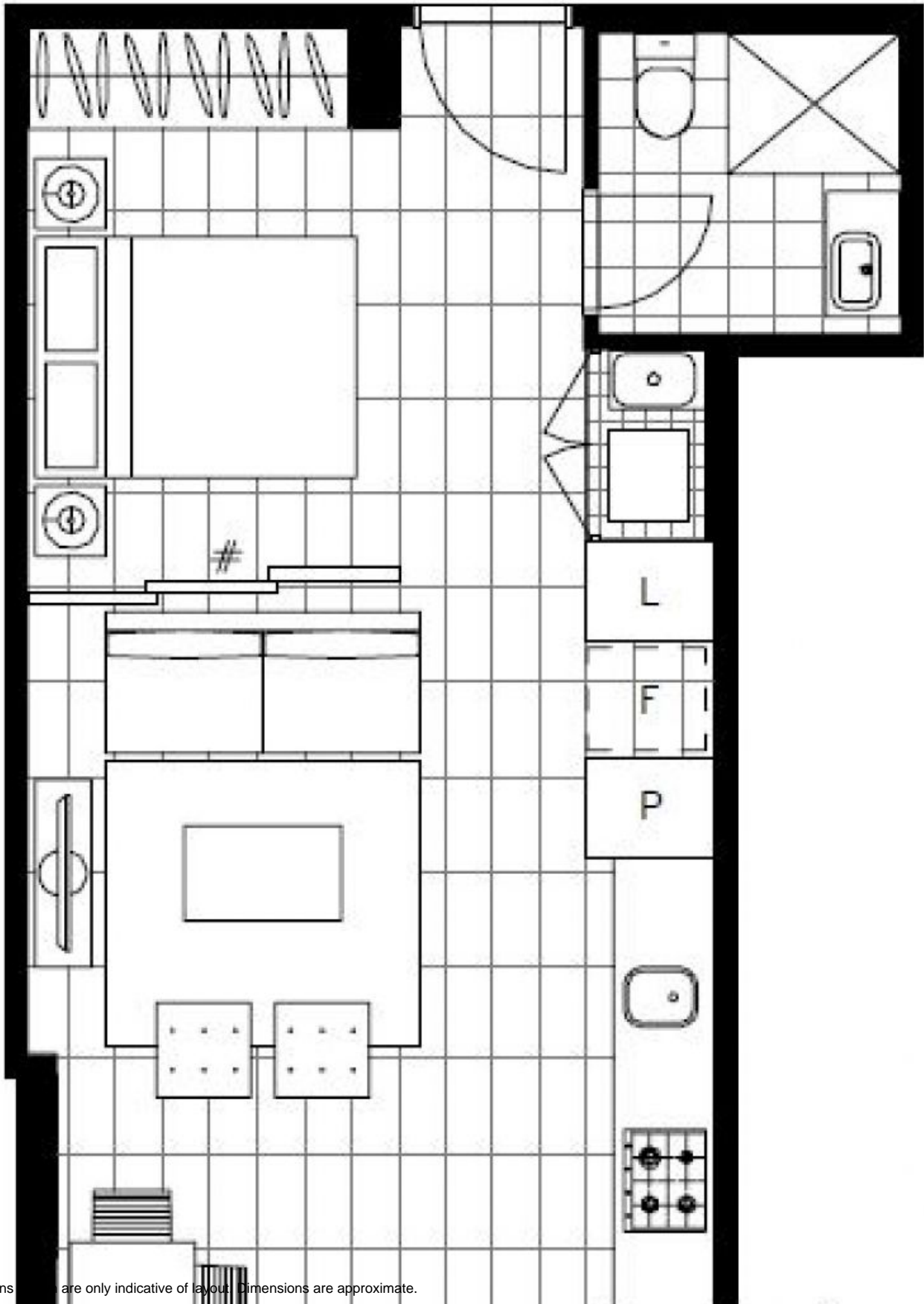
**Contact:** Matthew Matthews  
02 8588 8888  
0418 266 590  
Stuart Nohra  
02 8588 8888  
0432 206 000

**Type:** Apartment

**Date Available:** 12/10/2019

**Bond:** \$2000

<https://www.resbymirvac.com>



Plans are only indicative of layout. Dimensions are approximate.

**GLEBE, NSW**  
408/95 Ross Street

