



DOCKLANDS, VIC

1902/80 Lorimer Street

2
BED

2
BATH

2
CAR



An Authentic Yarra's Edge Retreat

This two bedroom apartment offers the largest internal living floor plan in Yarra's Edge Tower 4 and sleek modern living, stunning panoramic views and a relaxed waterfront lifestyle.

An open central living zone incorporates a spacious lounge, designated dining area and a gourmet kitchen with Miele appliances, stone benchtops, mirrored splashback and space for a second dining/study area. The sunny north-easterly aspect and spectacular views on offer are highlighted through floor-to-ceiling windows and a full-length undercover balcony ideal for alfresco entertaining all-year round.

Privately positioned, two double bedrooms feature balcony access and built-in robes, with the master also enjoying a luxurious en-suite with dual-vanities and bath. Clever built-in cabinetry enhances the liveability and offers an abundance of storage throughout. Completing this awesome apartment is a central bathroom, separate laundry, ducted

heating/cooling, video intercom and two secure car spaces side by side.

Tower 4 residents enjoy access to the resort-style RekDek featuring pool, spa, sauna, steam room, and gym. Centrally located in the heart of Yarra's Edge - South Wharf Promenade, DFO shopping, freeway access, trams, Southern Cross Station and Melbourne's CBD are just moments away.

Under Offer

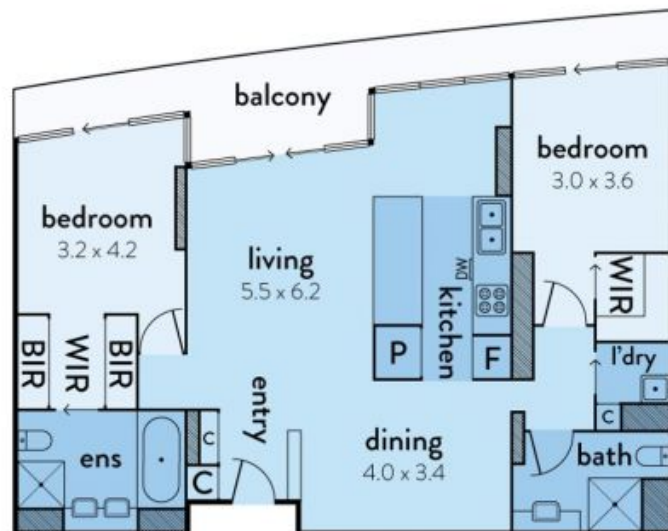
Contact: Baden Lucas
03 9645 1199
0418 888 751
Baden Lucas
03 9645 1199
0418 888 751

Type: Apartment

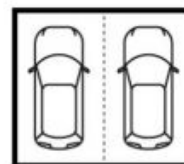
Sold Date: 06/11/2019

<https://www.resbymirvac.com>

1902/80 LORIMER STREET, DOCKLANDS



This floorplan is an artist's impression only, it contains information that we believe to be reliable however we cannot guarantee and accept no responsibility for the accuracy of information supplied. All dimensions are indicative and listed in metres. Interested parties should take their own measurements or engage the services of a licensed surveyor.



carspaces
(not in position)



Plans shown are only indicative of layout. Dimensions are approximate.

DOCKLANDS, VIC
1902/80 Lorimer Street