



**EAST MELBOURNE, VIC**  
720/280 Albert Street

**2** BED **2** BATH **1** CAR



**2-bedroom Eastbourne apartment - Fitzroy Gardens & City Views**

Imagine living opposite Fitzroy Gardens in 'The Eastbourne' apartment complex. Where elegance is timeless in this stunning two bedroom apartment, defined by bespoke luxury and style plus an amazing array of communal amenities. Highlighted by a sophisticated and spacious interior featuring a generous living area with prestige Miele appliances and integrated fridge/freezer opening to a balcony with Garden and CBD views, two sparkling bathrooms and concealed laundry; plus one basement car space & storage locker.

**\$1050 per week**

**Contact:** Baden Lucas  
03 9645 1199  
0418 888 751

**Type:** Apartment

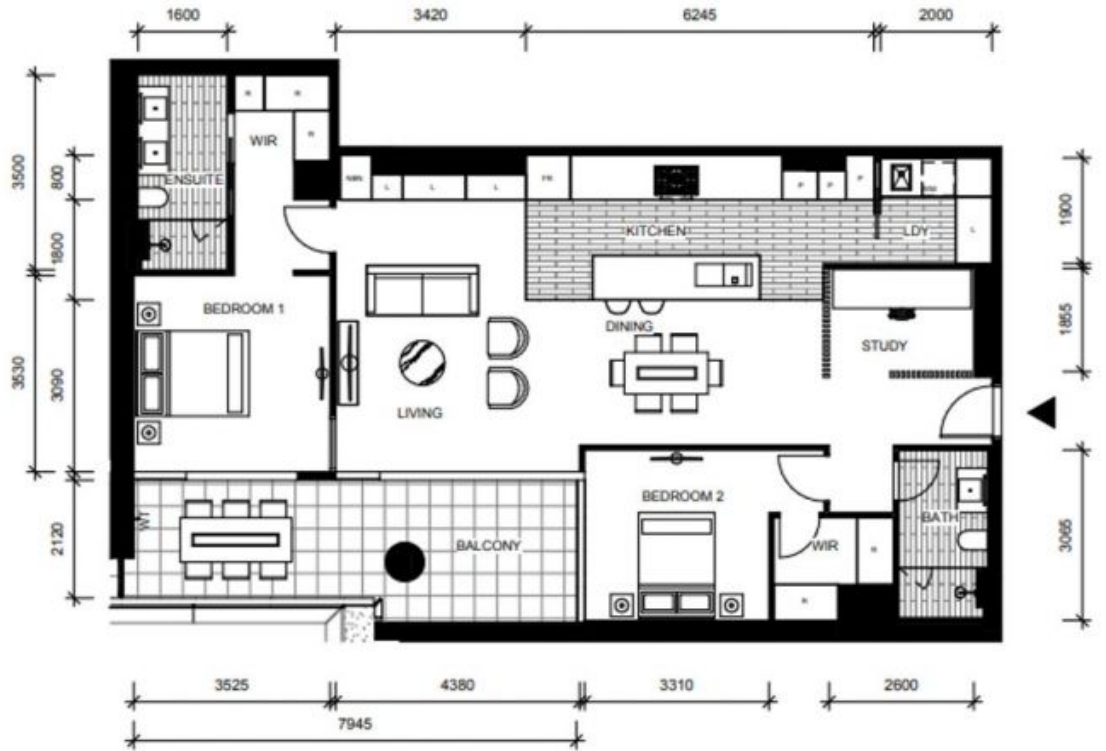
**Date Available:** 01/09/2019

**Leased Date:** 19/09/2019

**Bond:** \$6300

<https://www.resbymirvac.com>

A dazzling array of resort-style amenities available to the fortunate residents of The Eastbourne complex, include access to a luxurious 20-meter swimming pool, a fully-equipped gymnasium, Yoga and Pilates room, resident's lounge and courtyard terrace. Plus a private theatre, entertainer's kitchen and dining room, business centre, NBN ready, electric car charging, 24/7 concierge and Eastbourne app.



LEVEL 2, 3, 4, 5, 6, 7, 8

SCALE 1:100 @ A3

Please note that all the dimensions on plan are indicative only and provided for information only.

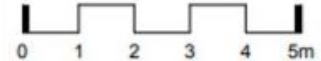
- APT 2-22
- APT 3-22
- APT 4-22
- APT 5-22
- APT 6-22
- APT 7-20
- APT 8-20

LOCATION PLAN



FOR CONSTRUCTION DIMENSIONED PLAN  
APARTMENT  
2 BED 2 BATH + STUDY

- Non Trafficable Roof
- Landscaping
- Privacy Screen - Opaque Glass Type 1
- Privacy Screen - Opaque Glass Type 2
- Privacy Screen - Interstitial Louvre



Plans shown are only indicative of layout. Dimensions are approximate.

**EAST MELBOURNE, VIC**  
720/280 Albert Street