



## EAST MELBOURNE, VIC

304/280 Albert Street

2  
BED

2  
BATH

1  
CAR



### Tantalizing 2Bedroom apartment with garden views

Welcome to The Eastbourne, Melbourne's inner city Eden

Mirvac's Flagship development designed by Award-Winning Architects Bates & Smart, located in East Melbourne. A neighbourhood of distinction, steeped in history and home to a privileged few.

- ? Generous living/ dining flowing to a balcony overlooking Fitzroy Gardens
- ? Superb timber & prestige Miele equipped kitchen
- ? Sleek bathroom plus European laundry
- ? Study nook
- ? Ducted heating and cooling
- ? Video intercom entry

**\$1,050 per week**

**Contact:** Aleiasha Clark  
03 9645 1199  
0491 174 507

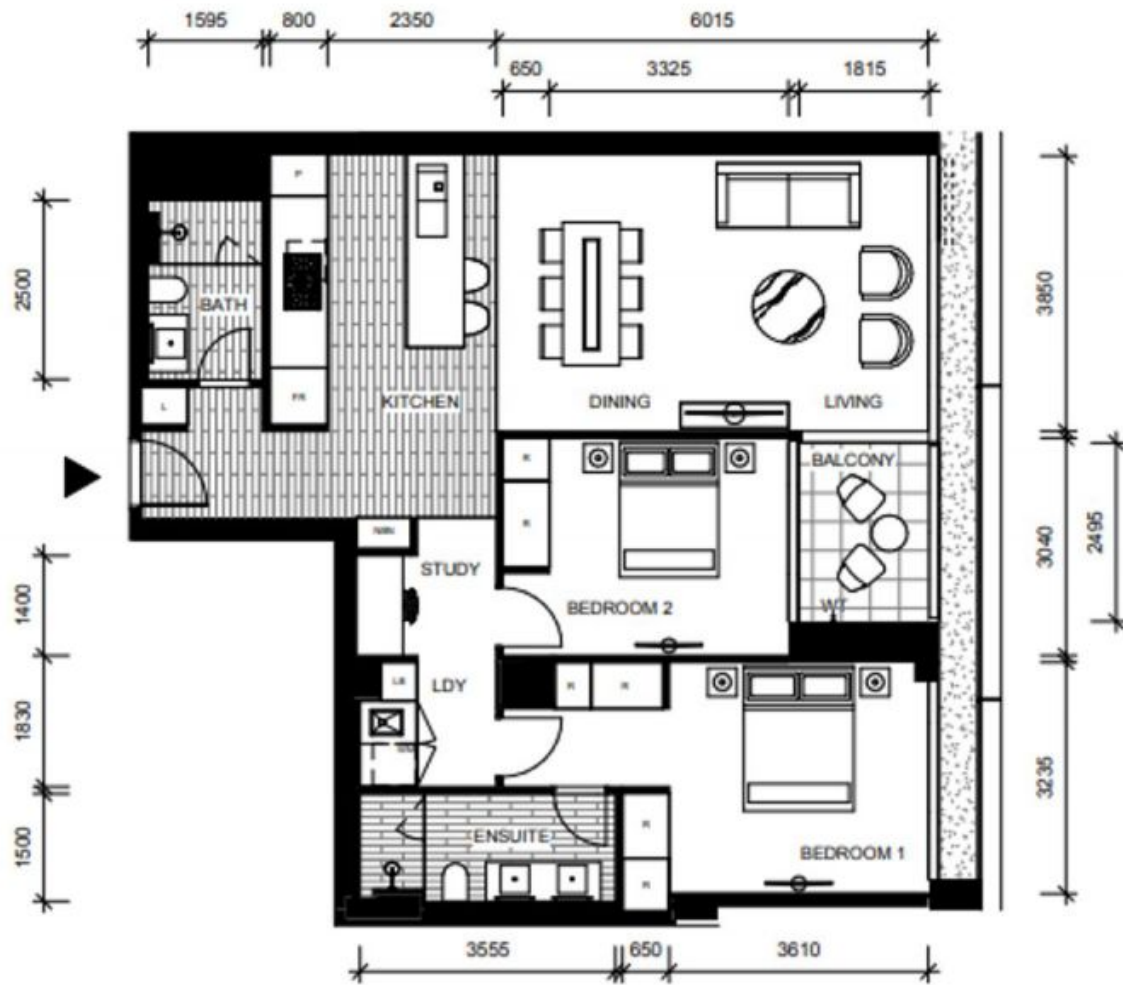
**Type:** Apartment

**Date Available:** 26/08/2019

**Leased Date:** 18/10/2019

**Bond:** \$6300

<https://www.resbymirvac.com>



LEVEL 2, 3, 4, 5

APT 2-04  
APT 3-04  
APT 4-04  
APT 5-04

#### LOCATION PLAN

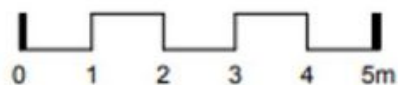


#### FOR CONSTRUCTION DIMENSIONED PLAN

#### APARTMENT 2 BED 2 BATH



- Non Trafficable Roof
- Landscaping
- Privacy Screen - Opaque Glass Type 1
- Privacy Screen - Opaque Glass Type 2
- Privacy Screen - Interstitial Louvre



Plans shown are only indicative of layout. Dimensions are approximate.

**EAST MELBOURNE, VIC**  
304/280 Albert Street