



ZETLAND, NSW

302/960 Bourke Street

1
BED

1
BATH



Bright 1-Bedroom Apartment in Zetland

This 58sqm, 3rd floor Apartment features:

- Large bedroom with generous built-in wardrobe
- Open-plan living and dining area, leading to North-East facing balcony
- Modern kitchen with stone benchtop and Smeg appliances
- Sleek bathroom with plenty of storage
- Internal laundry with dryer included
- Secure storage cage included
- Ducted A/C, video intercom and NBN connectivity
- 300m to Woolworths, The Social Corner and Green Square Train Station (10mins to the City)
- Exclusive rooftop access located on Level 2

DEPOSIT TAKEN - FIRST INSPECTION!

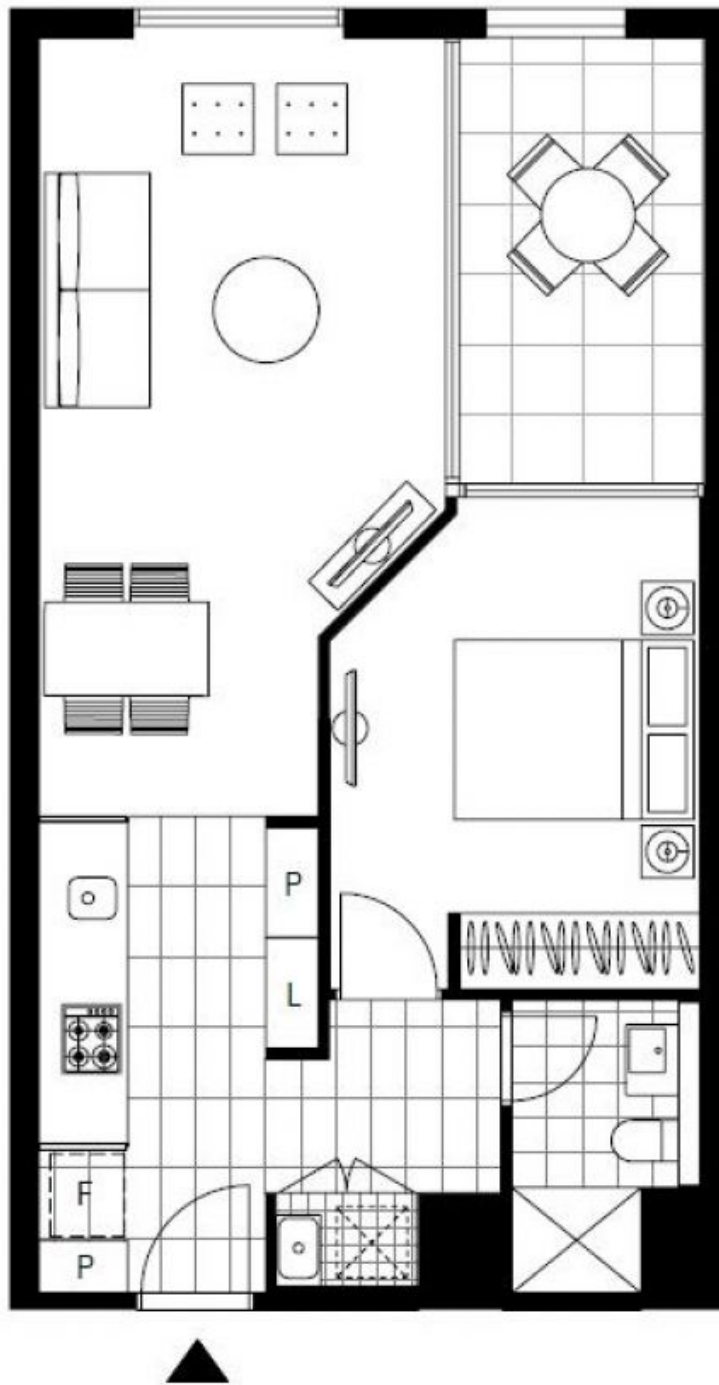
Contact: Carmen Whiteley
02 8588 8888
0497 555 519

Type: Apartment

Date Available: 10/03/2021

Bond: \$1980

<https://www.resbymirvac.com>



Plans shown are only indicative of layout. Dimensions are approximate.

ZETLAND, NSW
302/960 Bourke Street