



DONCASTER, VIC

313/65 Stables Circuit

2 **2** **1**
BED BATH CAR



Brand new 2-bedroom apartment with stunning views

This Phoenix apartment is set to elevate the lifestyle of its tenant.

With lush parklands at its doorstep; where style, privacy and timeless design blends with nature, beauty and freedom. Unique, exclusive and limited, this is a lifestyle of distinction.

Apartment features:

- ? Bespoke design, quality construction and finishes
- ? Large internal space of 82m²
- ? Balcony ? 90m² ? overlooking park
- ? Storage cage near car space
- ? Twin shower upgrade
- ? Stainless steel Miele appliances and integrated dishwasher

\$480 per week

Contact: Baden Lucas
03 9645 1199
0418 888 751

Type: Apartment

Date Available: 30/07/2019

Leased Date: 16/08/2019

Bond: \$2086

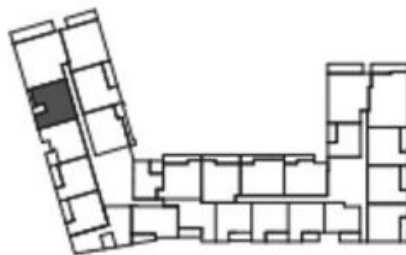
<https://www.resbymirvac.com>



LEVEL 03

APT 3.13

LOCATION PLAN



APARTMENT TYPE
2 BED, 2 BATH

INTERNAL AREA 82 m²

BALCONY AREA 8 m²

TOTAL AREA 90 m²

Areas subject to final survey, area includes balcony and/or terrace where applicable. It excludes parking and external storage areas.

Plans shown are only indicative of layout. Dimensions are approximate.

DONCASTER, VIC
313/65 Stables Circuit