



EAST MELBOURNE, VIC

1201/296 Victoria Parade

2 BED **2** BATH **2** CAR



The Eastbourne - 2-bedroom apartment with study desk and bathtub

Be the first to call The Eastbourne home!

This brand-new, 2-bedroom apartment is located in the prestigious Eastbourne development.

Apartment features:

- ? Bespoke design, quality construction and finishes
- ? Internal space of 115m²
- ? Large Balcony ? 17m²
- ? X2 Car spaces
- ? Storage cage near car space
- ? Luxurious ensuite with feature bathtub

\$1200 per week

Contact: Baden Lucas
03 9645 1199
0418 888 751

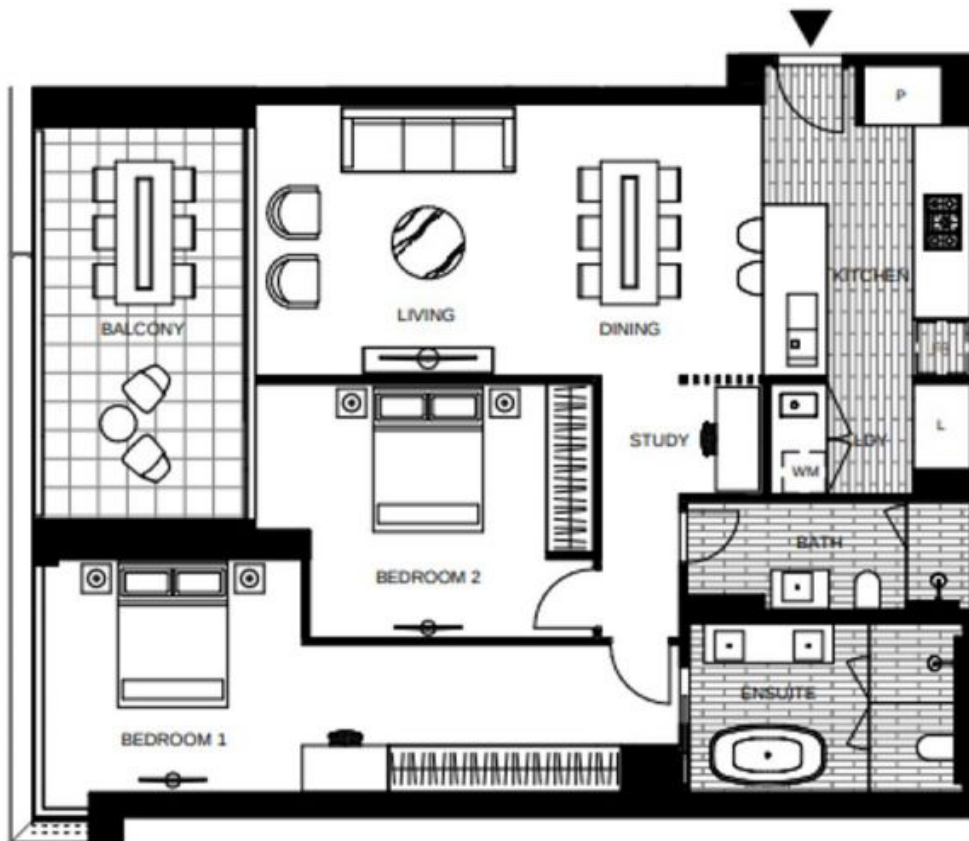
Type: Apartment

Date Available: 29/07/2019

Leased Date: 05/08/2019

Bond: \$7200

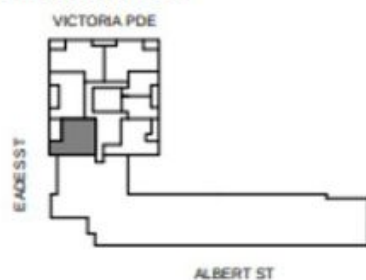
<https://www.resbymirvac.com>



LEVEL 12V, 13V, 14V

APT 12-01V
APT 13-01V
APT 14-01V

LOCATION PLAN



APARTMENT 2 BED 2 BATH + STUDY

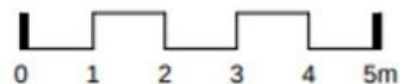


Internal Area 115m²

Balcony Area 17m²

Total Area 132m²

Areas subject to final survey, area includes balcony and/or terrace where applicable. It excludes parking and external storage areas.



Plans shown are only indicative of layout. Dimensions are approximate.

EAST MELBOURNE, VIC
1201/296 Victoria Parade