

DONCASTER, VIC
326/65 Stables Circuit

2 BED **2** BATH **1** CAR



Stunning, brand new, 2-bedroom apartment overlooking parklands

Be the very first to enjoy a brand new and beautifully appointed apartment within Mirvac's award-winning Tullamore estate.

Phoenix apartments offer exemplary living with a refreshing approach to providing genuinely considered and spacious living. The fortunate residents are surrounded by lush parklands, a master planned community, incredible shopping, public transport and exceptional quality throughout.

Apartment features:

- ? Bespoke design, quality construction and finishes
- ? Large internal space of 82m2
- ? Balcony ? 12m2 ? overlooking park

\$540 per week

Contact: Baden Lucas
03 9645 1199
0418 888 751

Type: Apartment

Date Available: 29/07/2019

Leased Date: 19/08/2019

Bond: \$2346

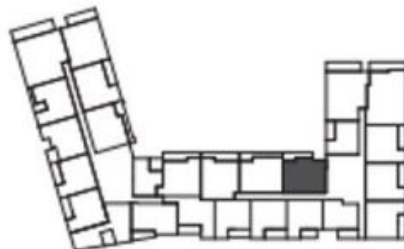
<https://www.resbymirvac.com>



LEVEL 03

APT 3.26

LOCATION PLAN

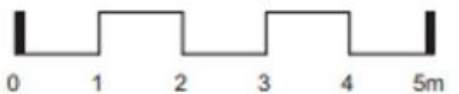


APARTMENT TYPE
2 BED, 2 BATH + MEDIA

INTERNAL AREA 82 m²
BALCONY AREA 12 m²

TOTAL AREA 94 m²

Areas subject to final survey, area includes balcony and/or terrace where applicable. It excludes parking and external storage areas.



Plans shown are only indicative of layout. Dimensions are approximate.

DONCASTER, VIC
326/65 Stables Circuit