



DOCKLANDS, VIC
2403/50 Lorimer Street

2 BED **2** BATH **2** CAR 

Tower One: An unmissable apartment with views and space

From the open and sizeable living zones to the inspired views taking in the Yarra River and greenery of the Victoria Harbour precinct, this generous 2 bedroom, 2 bathroom apartment is the height of stylish Yarra's Edge living.

- ? Enjoy 134 sqm (approx.) of internal and external space
- ? Two dedicated balcony areas all enjoy a westerly aspect and memorable river views perfect at sunset
- ? Amazing space though dedicated lounge and dining zones
- ? Functional stylish kitchen boasts a smart and open layout and includes a generous island bench and quality stainless steel appliances
- ? Extra-large master bedroom has dual BIRs and beautiful double vanity ensuite

\$950,000 - \$1,000,000

Contact: Baden Lucas
03 9645 1199
0418 888 751

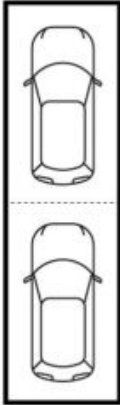
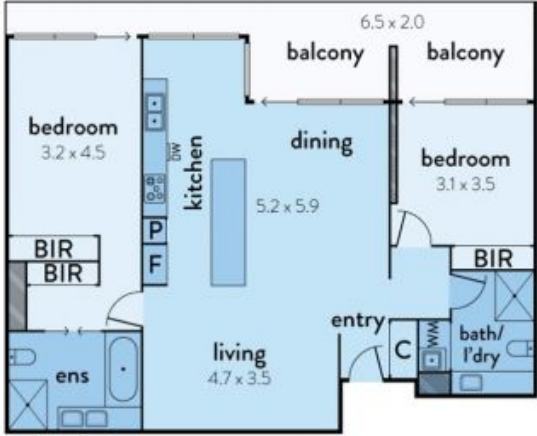
Type: Apartment
Sold Date: 06/09/2019

<https://www.resbymirvac.com>

2403/50 LORIMER STREET, DOCKLANDS



This floorplan is an artist's impression only, it contains information that we believe to be reliable however we cannot guarantee and accept no responsibility for the accuracy of information supplied. All dimensions are indicative and listed in metres. Interested parties should take their own measurements or engage the services of a licensed surveyor.



carspaces
(not in position)



Plans shown are only indicative of layout. Dimensions are approximate.

DOCKLANDS, VIC
2403/50 Lorimer Street