



DONCASTER, VIC

G04/65 Stables Circuit

2
BED

1
BATH

1
CAR



Beautiful light-filled apartment with garden views ? \$480 per week Entertainer's Dream

This Phoenix apartment is set to elevate the lifestyle of its tenant.

With lush parklands at its doorstep; where style, privacy and timeless design blends with nature, beauty and freedom. Unique, exclusive and limited, this is a lifestyle of distinction.

Apartment features:

- ? Bespoke design, quality construction and finishes
- ? Large internal space of 66m2
- ? Balcony ? 22m2 ? overlooking park ? great for entertaining
- ? Storage cage near car spaces
- ? 1 car space

Contact: Baden Lucas
03 9645 1199
0418 888 751

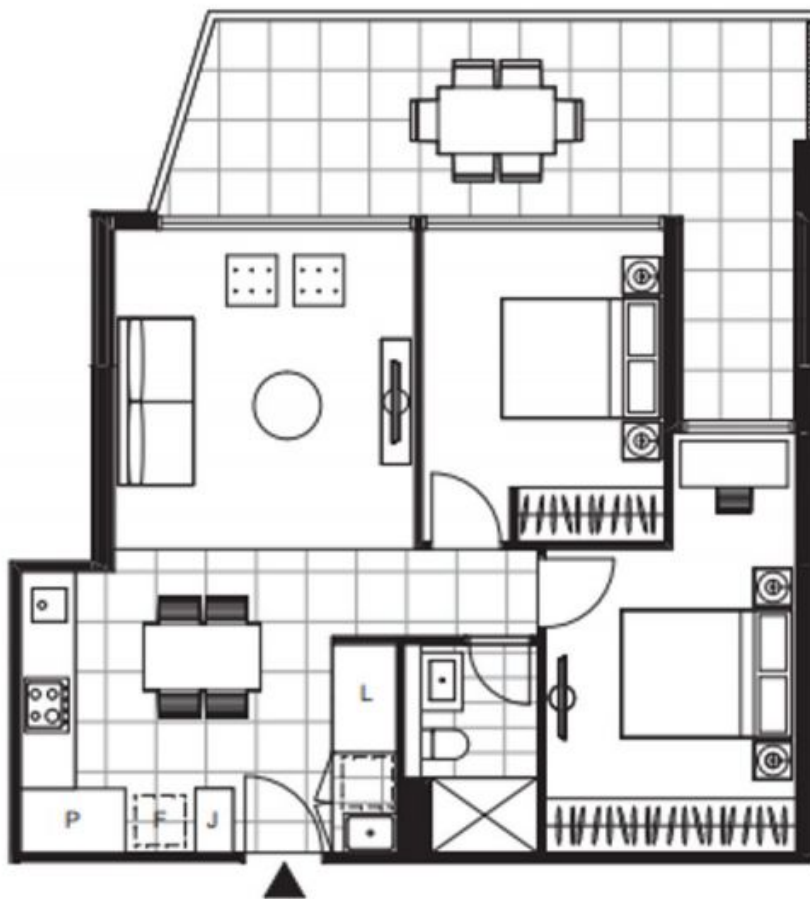
Type: Apartment

Date Available: 18/07/2019

Leased Date: 13/08/2019

Bond: \$2880

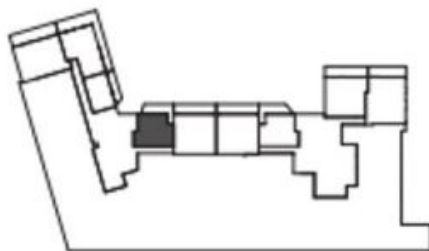
<https://www.resbymirvac.com>



GROUND FLOOR

APT G.04

LOCATION PLAN

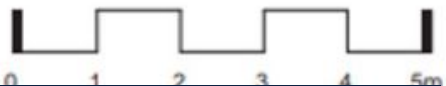


APARTMENT TYPE
2 BED, 1 BATH

INTERNAL AREA 66 m²
BALCONY AREA 22 m²

TOTAL AREA 88 m²

Areas subject to final survey, area includes balcony and/or terrace where applicable. It excludes parking and external storage areas.



Plans shown are only indicative of layout. Dimensions are approximate.

DONCASTER, VIC
G04/65 Stables Circuit