



EAST MELBOURNE, VIC
607/296 Victoria Parade

1 BED **1** BATH **1** CAR



The Eastbourne ? Brand New 1-bedroom apartment ? Premier Building

Be the first to call The Eastbourne home! Exceptional facilities like no other building in Melbourne ? this is living!

Eastbourne is set to be an inner-city Eden, a heartbeat from the city, yet feeling like a million miles away. Located in East Melbourne, a neighbourhood of distinction, steeped in history and home to a privileged few.

Apartment features:

- ? Bespoke design, quality construction and finishes
- ? Internal space of 53m2
- ? Balcony ? 5m2

\$580 per week

Contact: Baden Lucas
03 9645 1199
0418 888 751

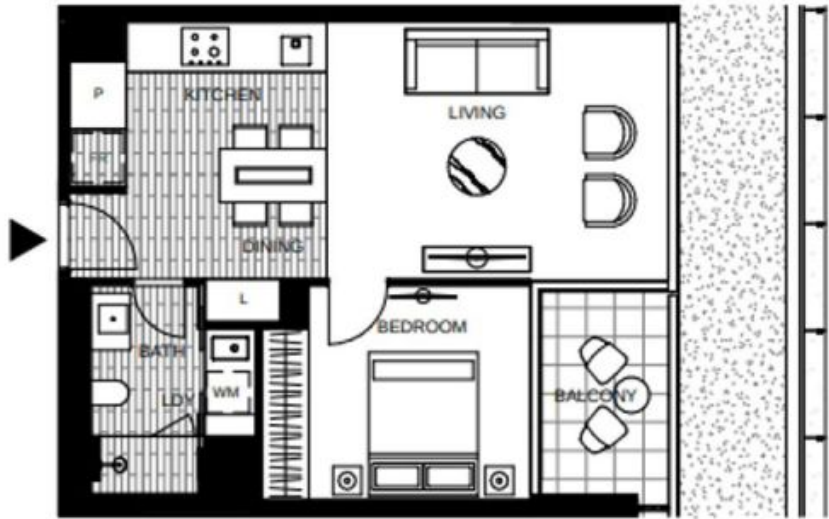
Type: Apartment

Date Available: 15/07/2019

Leased Date: 30/09/2019

Bond: \$2520

<https://www.resbymirvac.com>



LEVEL 6V

APT 6-07V

LOCATION PLAN



APARTMENT
1 BED 1 BATH

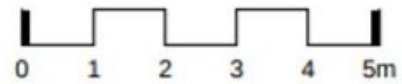


Internal Area 53m²

Balcony Area 5m²

Total Area 58m²

Areas subject to final survey, area includes balcony and/or terrace where applicable. It excludes parking and external storage areas.



Plans shown are only indicative of layout. Dimensions are approximate.

EAST MELBOURNE, VIC
607/296 Victoria Parade