

ZETLAND, NSW

309/6 Ebsworth Street

1
BED

1
BATH



1-Bedroom Apartment + Study Area in Ovo, Zetland

This 66sqm, 1-Bedroom Apartment features:

- Large bedroom with built-in wardrobe
- Spacious living and dining area
- Modern kitchen with stone benchtop and Smeg appliances
- Sleek bathroom with plenty of storage
- Internal laundry with dryer included
- Generous study nook off kitchen
- North-facing balcony
- Secure storage cage included
- Ducted A/C, video intercom and NBN connectivity
- 300m to Woolworths, The Social Corner and Green Square Train Station (10mins to the City)

DEPOSIT TAKEN

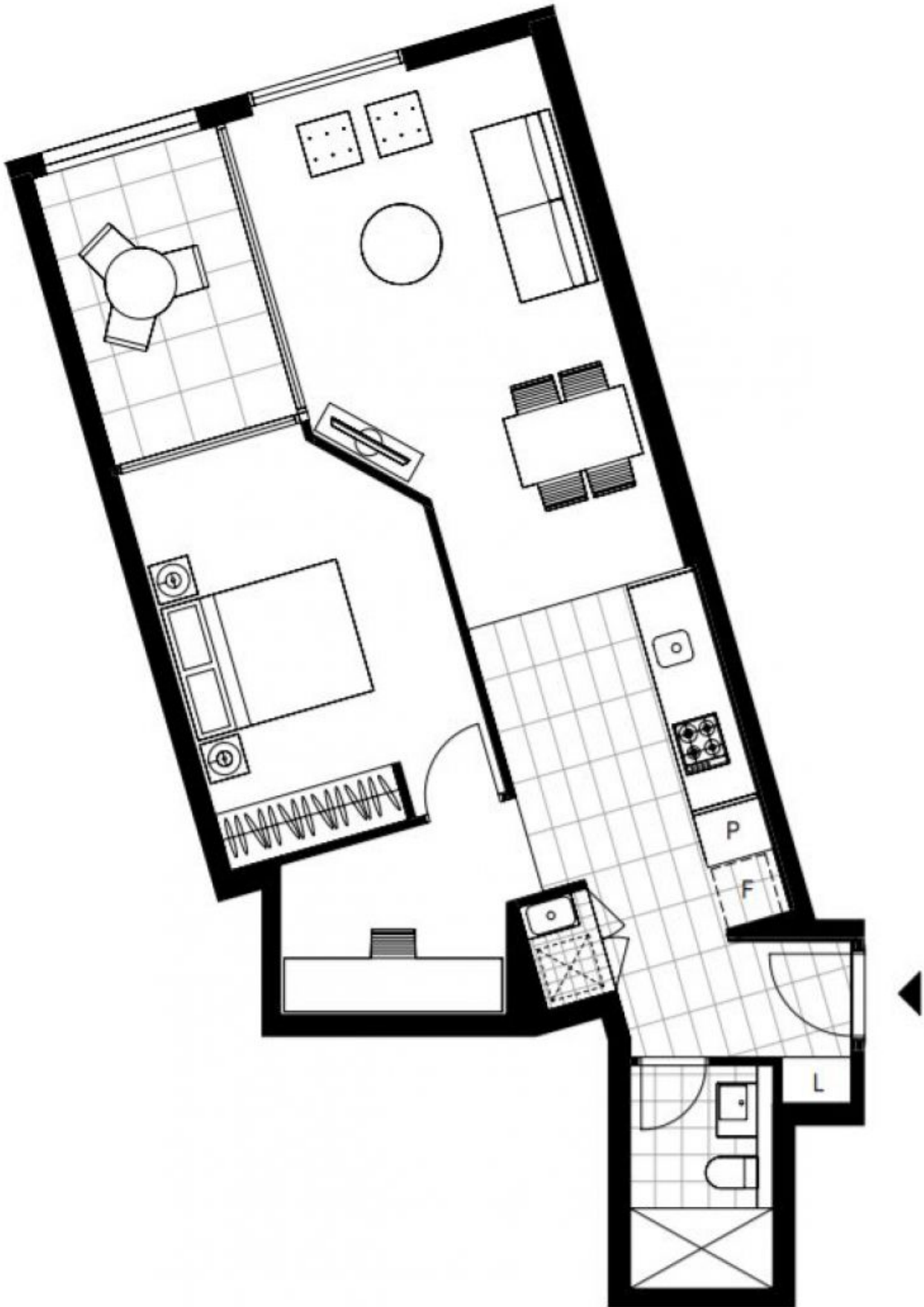
Contact: Carmen Whiteley
02 8588 8888
0497 555 519

Type: Apartment

Date Available: 27/07/2019

Bond: \$2240

<https://www.resbymirvac.com>



Plans shown are only indicative of layout. Dimensions are approximate.

ZETLAND, NSW
309/6 Ebsworth Street