



ZETLAND, NSW
305/8 Ebsworth Street

1 BED **1** BATH



Mirvac's Green Square - 1 Bedroom plus Media

This contemporary apartment is a stylish forerunner in the Green Square community precinct.

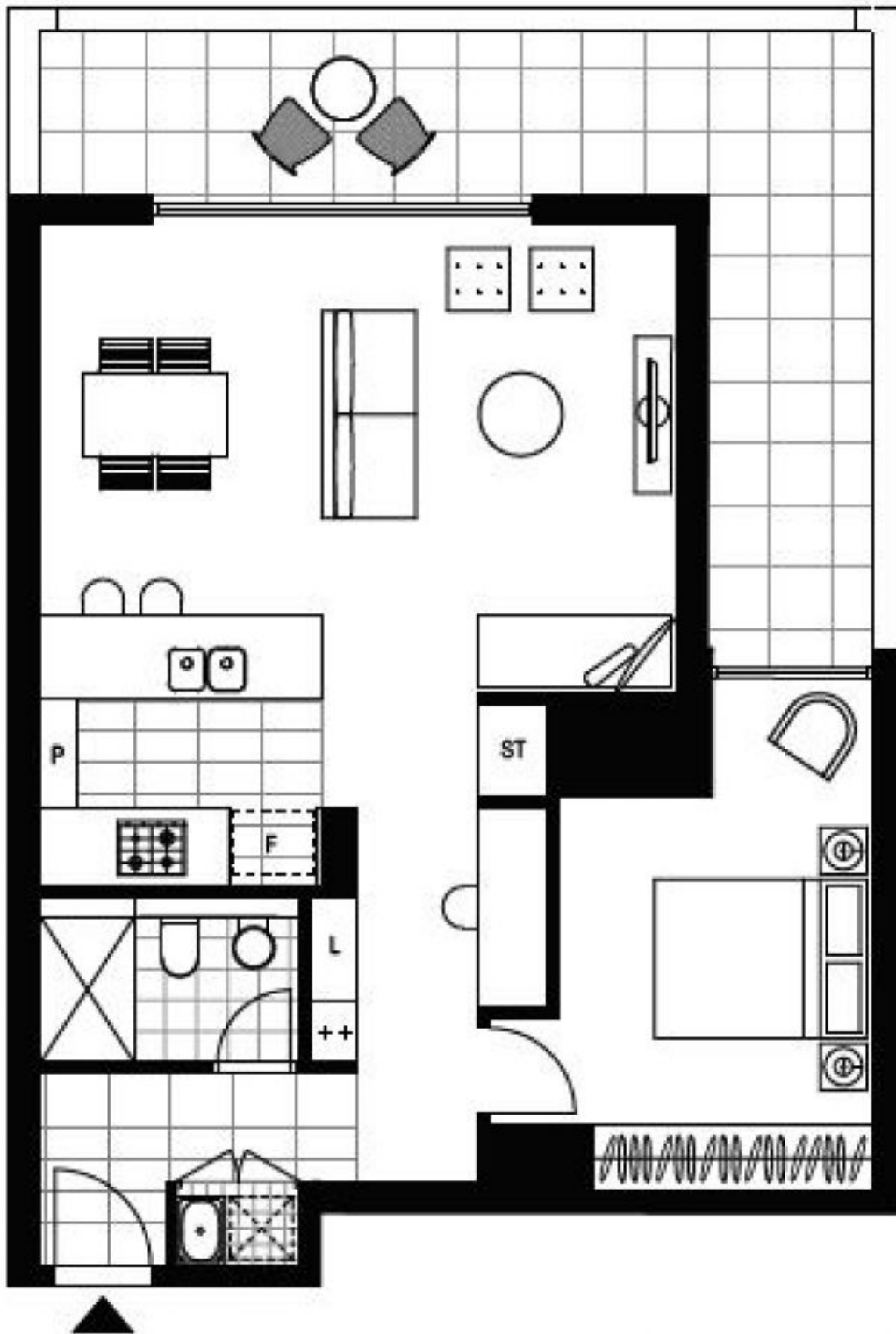
Offering spacious lounge and dining area, large built-in wardrobe, media desk and direct access to the communal courtyard with city views.

Green Square train station to the C.B.D. and airport only a short commute away. This property is perfect for anyone seeking convenient living.

- The property features:
- Open plan living and dining areas
 - Modern kitchen with SMEG appliances
 - Stone bench tops and breakfast bar

UNDER OFFER

Council Rates: \$1,040/year (approx)
Strata Rates: \$3,912/year (approx)
Contact: Matthew Matthews
 02 8588 8888
 0418 266 590
Type: Apartment
Sold Date: 01/10/2019
<https://www.resbymirvac.com>



LEVEL 3

Plans shown are only indicative of layout. Dimensions are approximate.

ZETLAND, NSW
305/8 Ebsworth Street