



## ZETLAND, NSW

305/8 Ebsworth Street

**1**  
BED

**1**  
BATH



### Mirvac's Green Square - 1 Bedroom plus Media

This contemporary apartment is a stylish forerunner in the Green Square community precinct.

Offering spacious lounge and dining area, large built-in wardrobe, media desk and direct access to the communal courtyard with city views.

Green Square train station to the C.B.D. and airport only a short commute away. This property is perfect for anyone seeking convenient living.

The property features:

- Open plan living and dining areas
- Modern kitchen with SMEG appliances
- Stone bench tops and breakfast bar

### UNDER OFFER

**Council Rates:** \$1,040/year (approx)

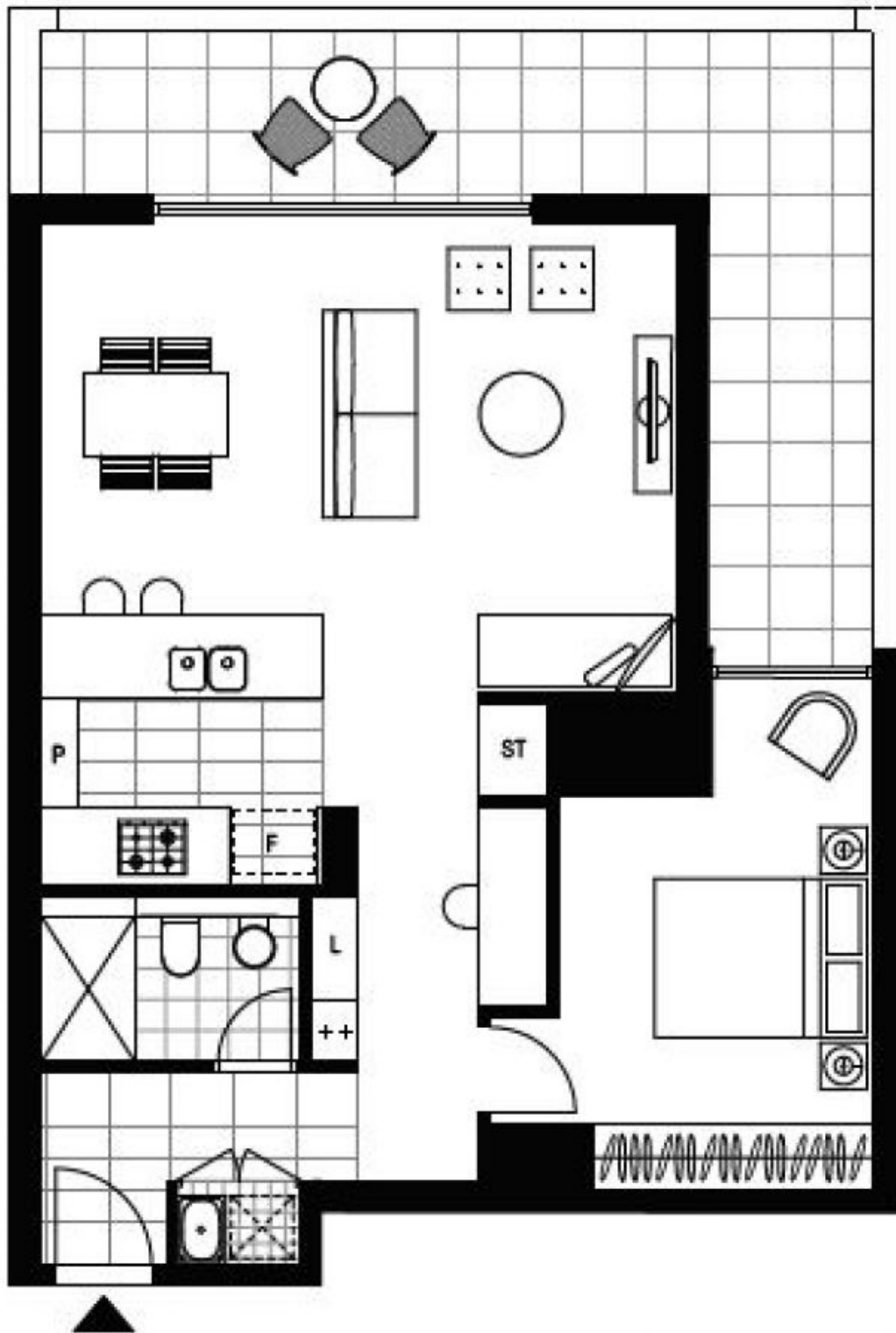
**Strata Rates:** \$3,912/year (approx)

**Contact:** Matthew Matthews  
02 8588 8888  
0418 266 590

**Type:** Apartment

**Sold Date:** 01/10/2019

<https://www.resbymirvac.com>



LEVEL 3

Plans shown are only indicative of layout. Dimensions are approximate.

**ZETLAND, NSW**  
305/8 Ebsworth Street