



DONCASTER, VIC

G01/65 Stables Circuit

2 BED **2** BATH **2** CAR



Beautiful light-filled apartment with garden views ? \$560 per week

137m2!

Be the first to live in Phoenix apartment - with lush parkland on its doorstep; where style, privacy and timeless design blends with nature, beauty and freedom. Unique, exclusive and limited, this is a lifestyle of distinction.

Apartment features:

- ? Bespoke design, quality construction and finishes
- ? Large internal space of 104m2
- ? Balcony ? 33m2 ? overlooking park
- ? Storage cage near car spaces
- ? X2 car spaces, side-by-side

Contact: Baden Lucas
03 9645 1199
0418 888 751

Type: Apartment

Date Available: 01/07/2019

Leased Date: 08/07/2019

Bond: \$3360

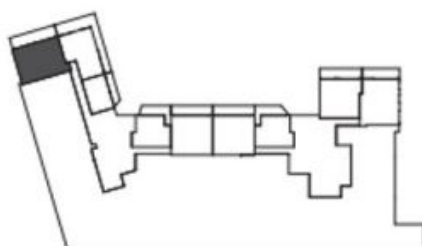
<https://www.resbymirvac.com>



GROUND FLOOR

APT G.01

LOCATION PLAN



APARTMENT TYPE
2 BED, 2 BATH + STUDY

INTERNAL AREA 104 m²

BALCONY AREA 33 m²

TOTAL AREA 137 m²

Areas subject to final survey, area includes balcony and/or terrace where applicable. It excludes parking and external storage areas.

Plans shown are only indicative of layout. Dimensions are approximate.

DONCASTER, VIC
G01/65 Stables Circuit