

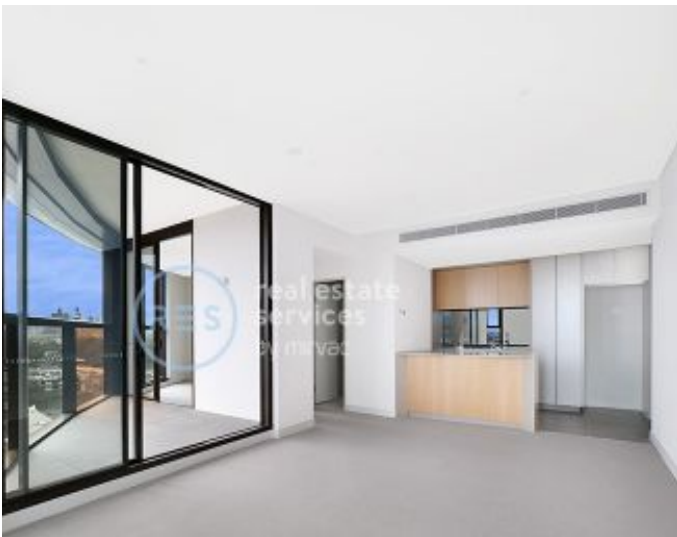
DEPOSIT TAKEN

More apartments available for lease in Green Square - Zetland!

Please call 0497 555 519 or email carmen.whiteley@resbymirvac.com for more information



GREEN SQUARE



ZETLAND, NSW
1803/6 Ebsworth Street

1
BED

1
BATH



High-Rise 1-Bedroom Apartment in Zetland

This 61sqm, West-facing 1-Bedroom Apartment features:

- Large bedroom with generous built-in wardrobe
- Open-plan living area, leading to balcony with partial city views
- Modern kitchen with stone benchtops and Smeg appliances
- Sleek bathroom with plenty of storage
- Internal laundry with dryer included
- Secure storage cage included
- Ducted A/C, video intercom and NBN connectivity
- 300m to Woolworths, The Social Corner and Green Square Train Station (10mins to the City)

Call 0497 555 519 for similar apartments!

Contact: Carmen Whiteley
02 8588 8888
0497 555 519

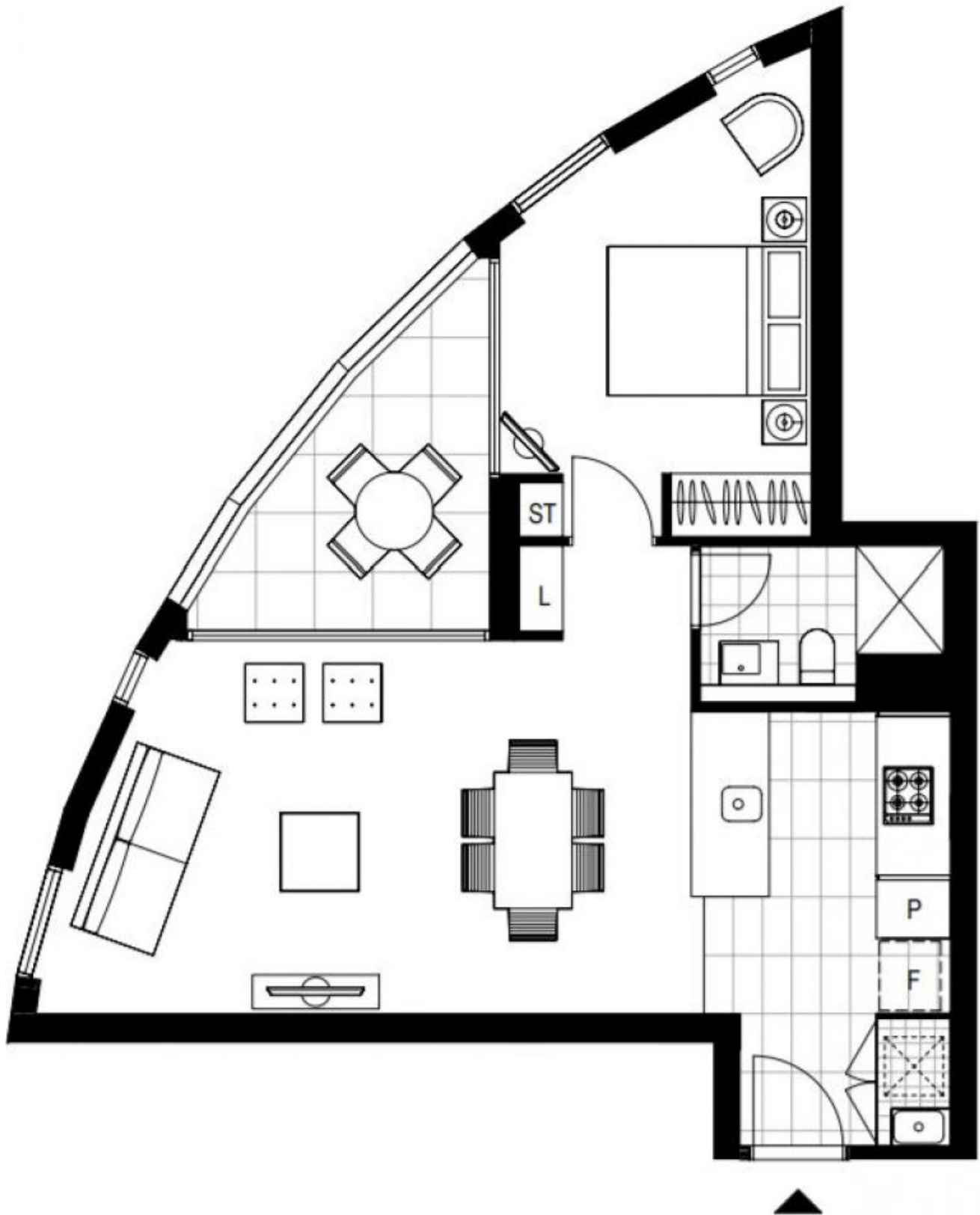
Type: Apartment

Date Available: 06/08/2020

Bond: \$2120

<https://www.resbymirvac.com>

For more information please contact Real Estate Services by Mirvac on 02 8588 8888 or email enquiries@resbymirvac.com - Your Onsite Agent!



Plans shown are only indicative of layout. Dimensions are approximate.

ZETLAND, NSW
1803/6 Ebsworth Street