

DEPOSIT TAKEN

## More apartments available for lease in Green Square - Zetland!

Please call 0497 555 519 or email [carmen.whiteley@resbymirvac.com](mailto:carmen.whiteley@resbymirvac.com) for more information



GREEN SQUARE



### ZETLAND, NSW 1803/6 Ebsworth Street

1  
BED

1  
BATH



#### High-Rise 1-Bedroom Apartment in Zetland

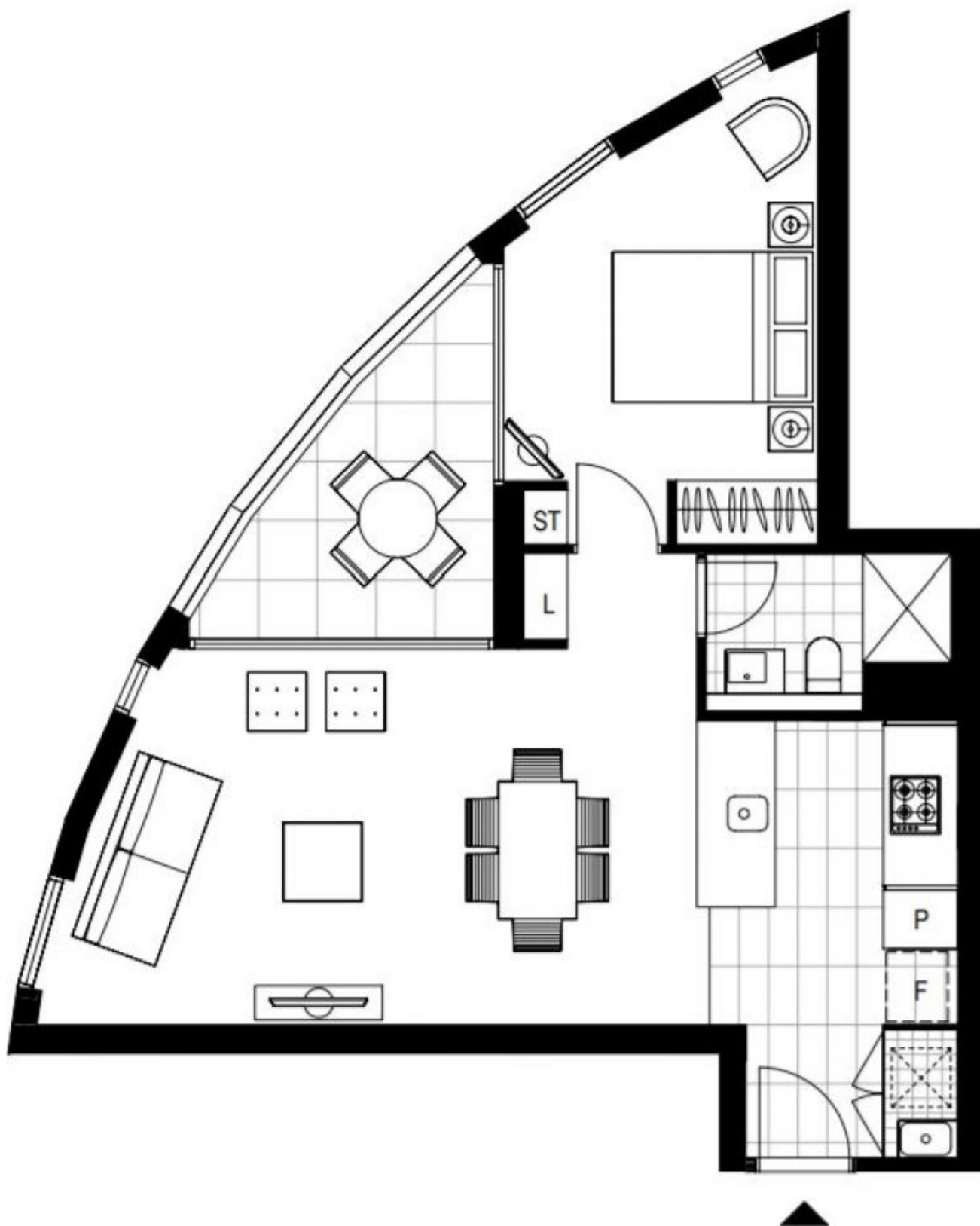
This 61sqm, West-facing 1-Bedroom Apartment features:

- Large bedroom with generous built-in wardrobe
- Open-plan living area, leading to balcony with partial city views
- Modern kitchen with stone benchtops and Smeg appliances
- Sleek bathroom with plenty of storage
- Internal laundry with dryer included
- Secure storage cage included
- Ducted A/C, video intercom and NBN connectivity
- 300m to Woolworths, The Social Corner and Green Square Train Station (10mins to the City)

#### Call 0497 555 519 for similar apartments!

**Contact:** Carmen Whiteley  
02 8588 8888  
0497 555 519  
**Type:** Apartment  
**Date Available:** 06/08/2020  
**Bond:** \$2120  
<https://www.resbymirvac.com>

For more information please contact Real Estate Services by Mirvac on 02 8588 8888 or email [enquiries@resbymirvac.com](mailto:enquiries@resbymirvac.com) - Your Onsite Agent!



Plans shown are only indicative of layout. Dimensions are approximate.

**ZETLAND, NSW**  
1803/6 Ebsworth Street