

## ZETLAND, NSW

405/6 Ebsworth Street

**1**  
BED

**1**  
BATH



### Bright 1-Bedroom Apartment in Ovo, Zetland

This 52sqm, 1-Bedroom Apartment features:

- Oversized bedroom with generous built-in wardrobes
- Open-plan living and dining area, leading to the balcony
- Contemporary kitchen with stone benchtop and Smeg appliances
- Sleek bathroom with plenty of vanity storage
- Internal laundry with dryer included
- Secure storage cage included
- Ducted A/C, video intercom and NBN connectivity
- 300m to Woolworths, The Social Corner and Green Square Train Station (10mins to the City)

### DEPOSIT TAKEN

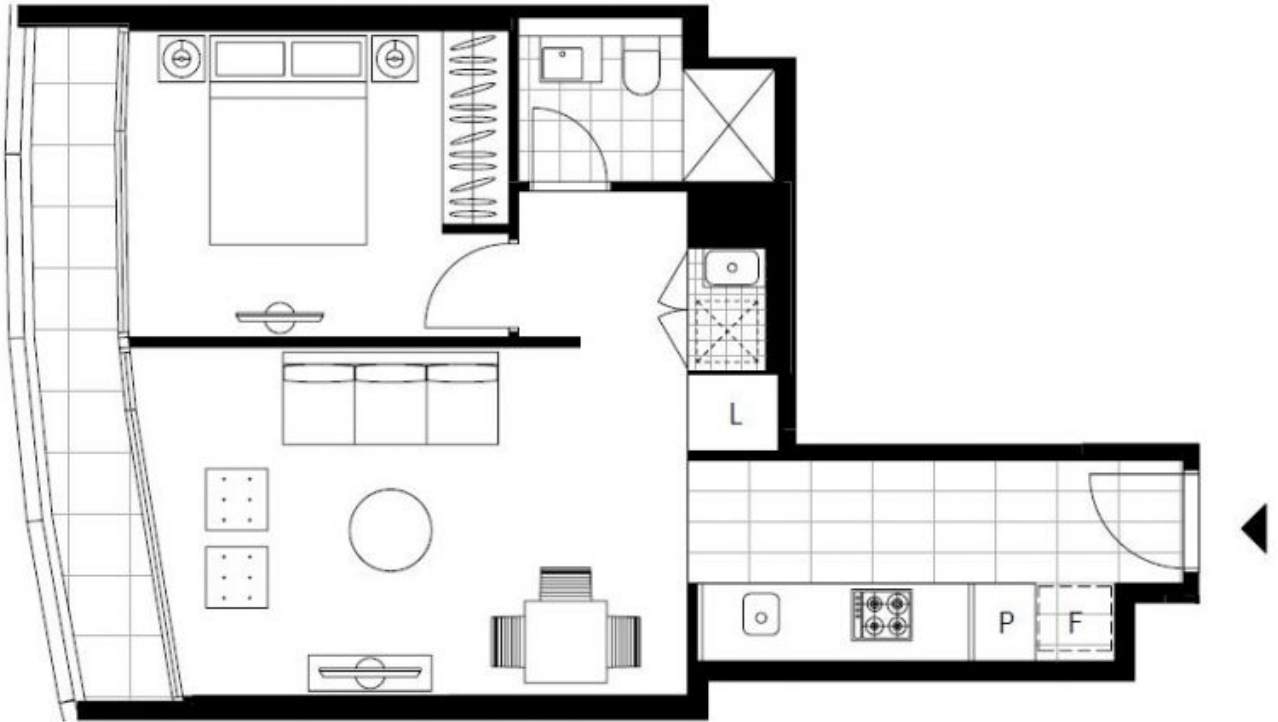
**Contact:** Carmen Whiteley  
02 8588 8888  
0497 555 519

**Type:** Apartment  
**Date Available:** 11/07/2019

**Bond:** \$2260

<https://www.resbymirvac.com>

\*\*Images are indicative only\*\*



Plans shown are only indicative of layout. Dimensions are approximate.

**ZETLAND, NSW**  
405/6 Ebsworth Street