



DOCKLANDS, VIC

907/50 Lorimer Street

1
BED

1
BATH

1
CAR



Yearn for This Memorable Yarra's Edge Oasis.

This 9th floor dwelling is sure to catch the eye of owner-occupiers and investors who are looking to dip their toes in the Docklands property market. The expansive balcony is truly the highlight of the apartment, with an amazing amount of entertaining space and light. With total size over 85sqms, it is one of the larger one bedroom apartments in Yarra's Edge, for residents appreciating a good sense of space.

Full floor to ceiling windows dominate the airy lounge and meals hub, while a kitchen that will have you wanting to always eat in with its fully appointed SMEG appliances, glass splashback, integrated fridge and freezer and loads of storage space.

\$500 per week

Contact: Baden Lucas
03 9645 1199
0418 888 751

Type: Apartment

Date Available: 16/07/2019

Leased Date: 17/07/2019

Bond: \$3000

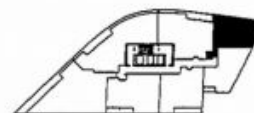
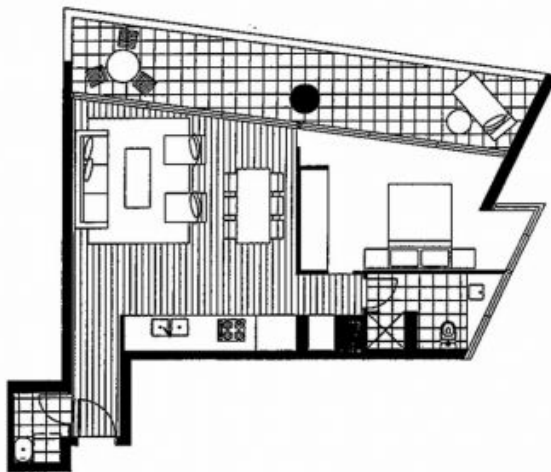
<https://www.resbymirvac.com>

Living 4.1 x 3.4
Dining 3.6 x 2.0

Bedroom 1 3.1 x 3.7 Plus Robe

Please note that this floor plan is a guide only.
The information contained herein is not guaranteed.
Dimensions are approximate. Prospect purchasers
must rely on their own enquiries.

Tower 1
Apartment 07
Level 8 - 29
Hard Surface Option



Plans shown are only indicative of layout. Dimensions are approximate.

DOCKLANDS, VIC
907/50 Lorimer Street