



## GLEBE, NSW

505/170 Ross Street

**2** BED **2** BATH **1** CAR 

### Deposit Taken!

This 97sqm, 5th Floor Apartment features:  
North-Facing 2-Bedroom Apartment in Harold Park

- Large bedrooms with generous built-in wardrobes
- Spacious living and dining area, leading to the balcony
- Modern kitchen with stone benchtops and Miele appliances
- Sleek bathrooms with great storage, bath in ensuite
- Large balcony, perfect for entertaining
- Internal laundry with washer and dryer included
- Secure car space and storage cage included
- Ducted A/C, video intercom and NBN connectivity
- 270m to the Heritage-listed Tramsheds, light rail station and public transport

### Deposit Taken!

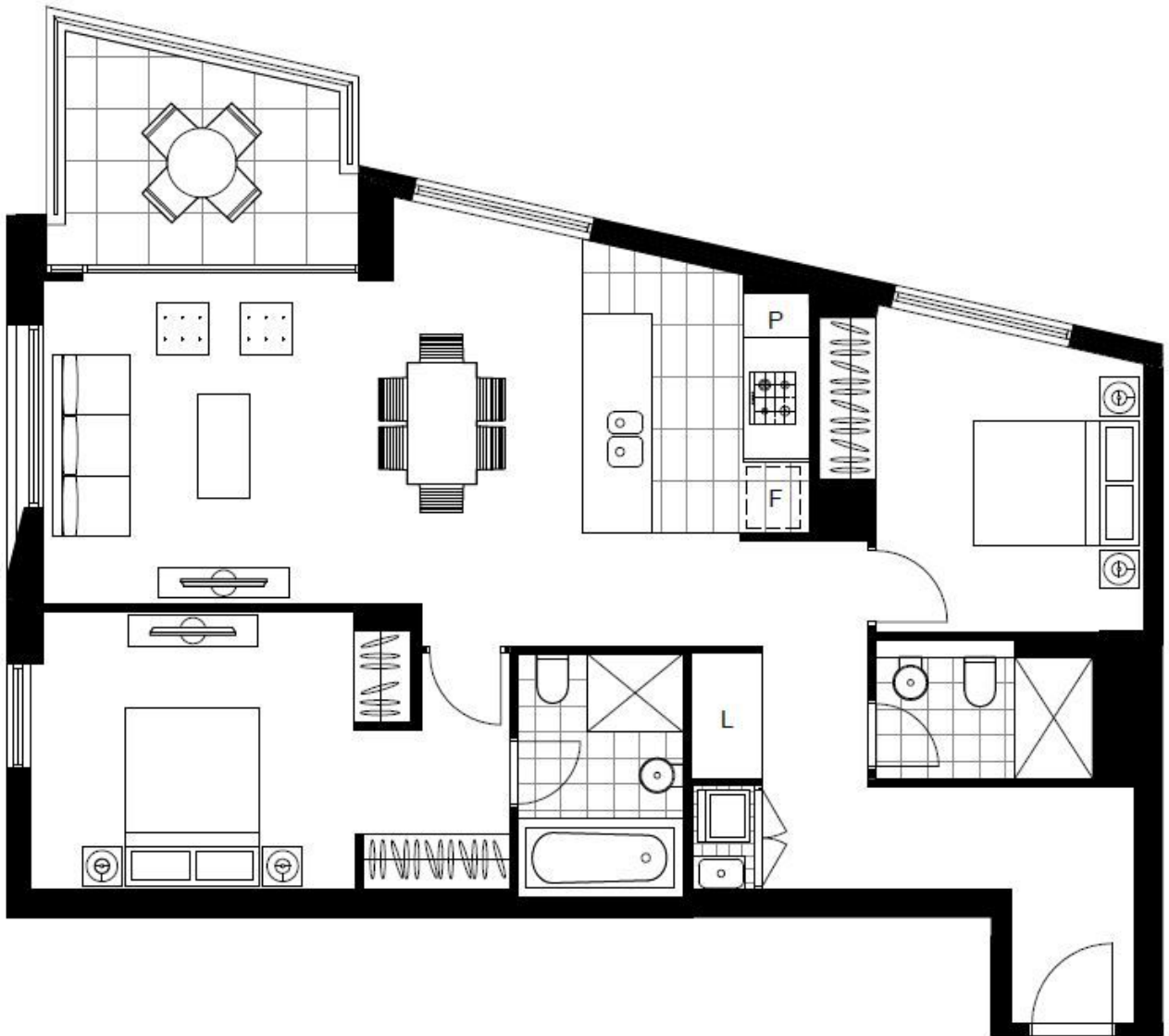
**Contact:** Naz Sabzpouri  
02 8588 8888  
0401 545 440

**Type:** Apartment

**Date Available:** 20/01/2021

**Bond:** \$3000

<https://www.resbymirvac.com>



Plans shown are only indicative of layout. Dimensions are approximate.

**GLEBE, NSW**  
505/170 Ross Street