

**ST LEONARDS, NSW**  
1006/472 Pacific Highway

|                 |                  |                 |
|-----------------|------------------|-----------------|
| <b>2</b><br>BED | <b>2</b><br>BATH | <b>1</b><br>CAR |
|-----------------|------------------|-----------------|



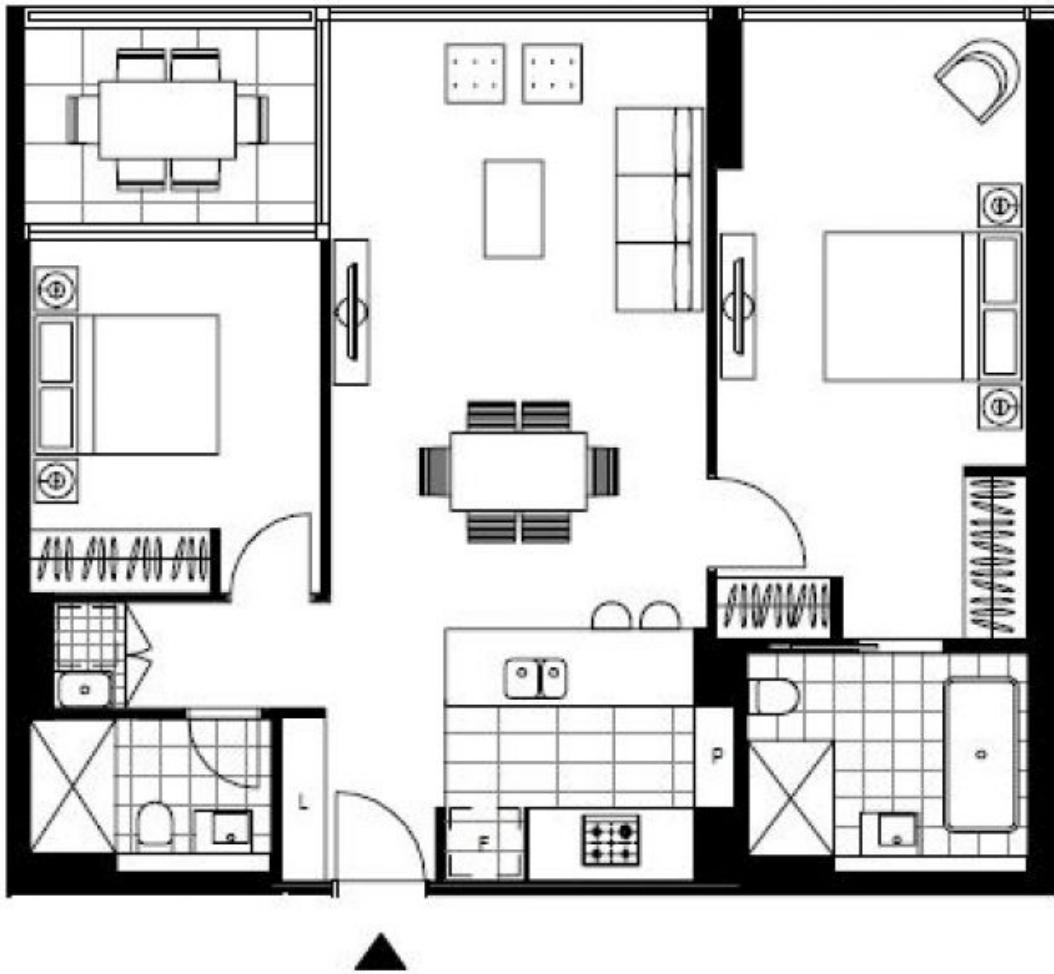
**UNDER OFFER**

St.Leonards Square exemplifies Mirvac's reputation for sophisticated living in Sydney with superb amenity, exceptional harbour and city views and a vibrant ground floor plaza, this is an iconic destination that will define St.Leonards for years to come.

- This 2 Bedroom apartment in "The William" offers:
- Harbour and city views
  - Stone kitchen island bench top with Miele appliances
  - Exclusive colour scheme and feature pendant lighting
  - Ducted air-conditioning
  - Internal laundry with washing machine and dryer included
  - Two secure storage cages in the basement

**SOLD BEFORE SETTLEMENT**

**Contact:** Matthew Matthews  
02 8588 8888  
0418 266 590  
**Type:** Apartment  
**Sold Date:** 28/08/2019  
<https://www.resbymirvac.com>



Plans shown are only indicative of layout. Dimensions are approximate.

**ST LEONARDS, NSW**  
1006/472 Pacific Highway