



## EAST MELBOURNE, VIC

1103/296 Victoria Parade

**2**  
BED

**2**  
BATH

**2**  
CAR



### The Eastbourne - 2-bedroom corner apartment with bathtub

Be the first to call The Eastbourne home! Currently under construction and due for completion in June, ready for tenants to move in late-June / early-July.

Eastbourne is set to be an inner-city Eden, a heartbeat from the city, yet feeling like a million miles away. Located in East Melbourne, a neighbourhood of distinction, steeped in history and home to a privileged few.

Apartment features:

? Bespoke design, quality construction and finishes

**\$1,300 per week**

**Contact:** Baden Lucas  
03 9645 1199  
0418 888 751

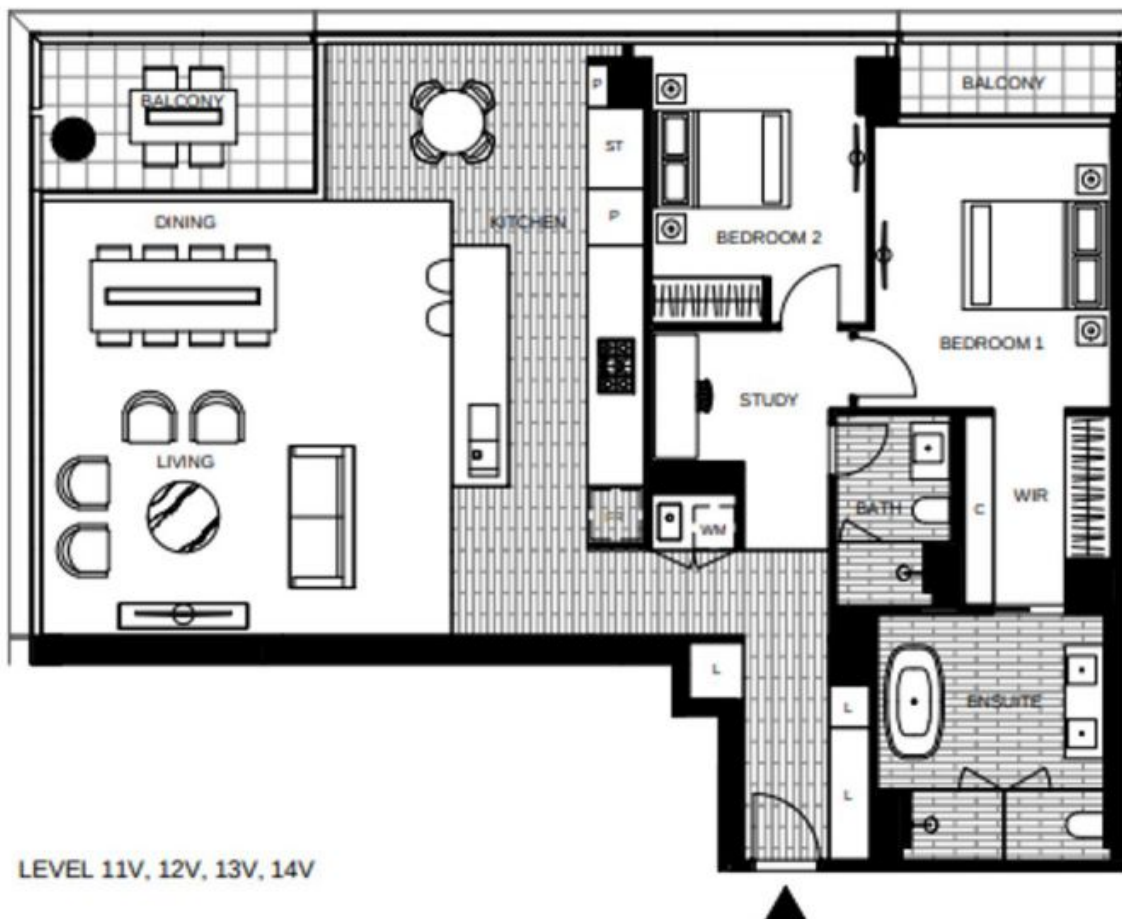
**Type:** Apartment

**Date Available:** 01/07/2019

**Leased Date:** 08/07/2019

**Bond:** \$7800

<https://www.resbymirvac.com>



APT 11-03V  
APT 12-03V  
APT 13-03V  
APT 14-03V

#### LOCATION PLAN



#### APARTMENT 2 BED 2 BATH +STUDY

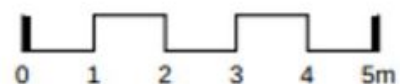


Internal Area 137m<sup>2</sup>

Balcony Area 13m<sup>2</sup>

Total Area 150m<sup>2</sup>

Areas subject to final survey, area includes balcony and/or terrace where applicable. It excludes parking and external storage areas.



Plans shown are only indicative of layout. Dimensions are approximate.

**EAST MELBOURNE, VIC**  
1103/296 Victoria Parade