



EAST MELBOURNE, VIC

1307/296 Victoria Parade

2 BED **2** BATH **1** CAR 

The Eastbourne - 2-bedroom apartment with study

The Eastbourne is set to be an inner-city Eden, a heartbeat from the city, yet feeling like a million miles away. Located in East Melbourne, a neighbourhood of distinction, steeped in history and home to a privileged few.

Apartment features:

- Bespoke design, quality construction and finishes
- Internal space of 110m²
- Large Balcony ? 10m²
- Storage cage near car space
- Luxurious ensuite with X2 basins
- Stainless steel Miele appliances, integrated dishwasher
- Intergrated Fisher & Paykel 403L Fridge/Freezer

\$900 Per week

Contact: Aleiasha Clark
03 9645 1199
0491 174 507

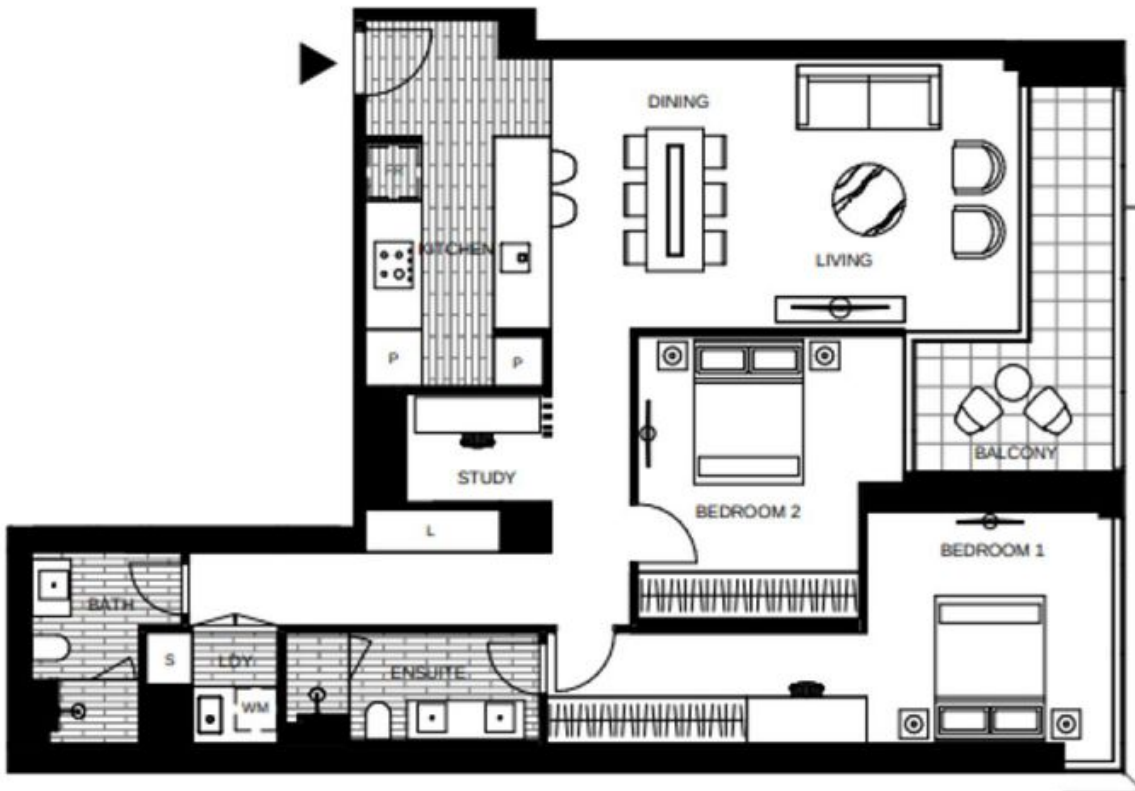
Type: Apartment

Date Available: 15/10/2021

Leased Date: 14/12/2021

Bond: \$3911

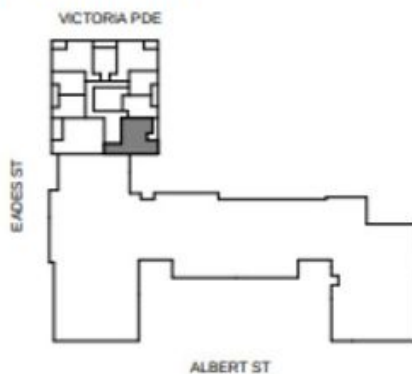
<https://www.resbymirvac.com>



LEVEL 7V,8V,9V,10V,11V,12V,13V,14V

- APT 7-09V
- APT 8-09V
- APT 9-09V
- APT 10-09V
- APT 11-07V
- APT 12-07V
- APT 13-07V
- APT 14-07V

LOCATION PLAN



**APARTMENT
2 BED 2 BATH + STUDY**

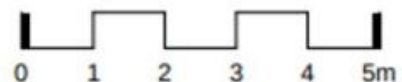


Internal Area 110m²

Balcony Area 10m²

Total Area 120m²

Areas subject to final survey, area includes balcony and/or terrace where applicable. It excludes parking and external storage areas.



Plans shown are only indicative of layout. Dimensions are approximate.

EAST MELBOURNE, VIC
1307/296 Victoria Parade