



ZETLAND, NSW

2205/6 Ebsworth Street

2 **2** **1** **RES**
BED BATH CAR

2-Bedroom Apartment with Sweeping City Views in Green Square

This 103sqm, 22nd floor Apartment features:

- Large bedrooms with generous built-in wardrobes
- Open-plan living and dining area, leading to the balcony
- Contemporary kitchen with stone benchtops with Miele appliances
- Sleek bathrooms with plenty of storage, bath in ensuite
- Spacious North-facing balcony with uninterrupted city views
- Internal laundry with dryer included
- Study nook off second bedroom, perfect for home office
- Secure car space and storage cage included
- Ducted A/C, video intercom and NBN connectivity
- 300m to Woolworths, The Social Corner and Green Square Train Station (10mins to the City)

DEPOSIT TAKEN - More Apartments Available!

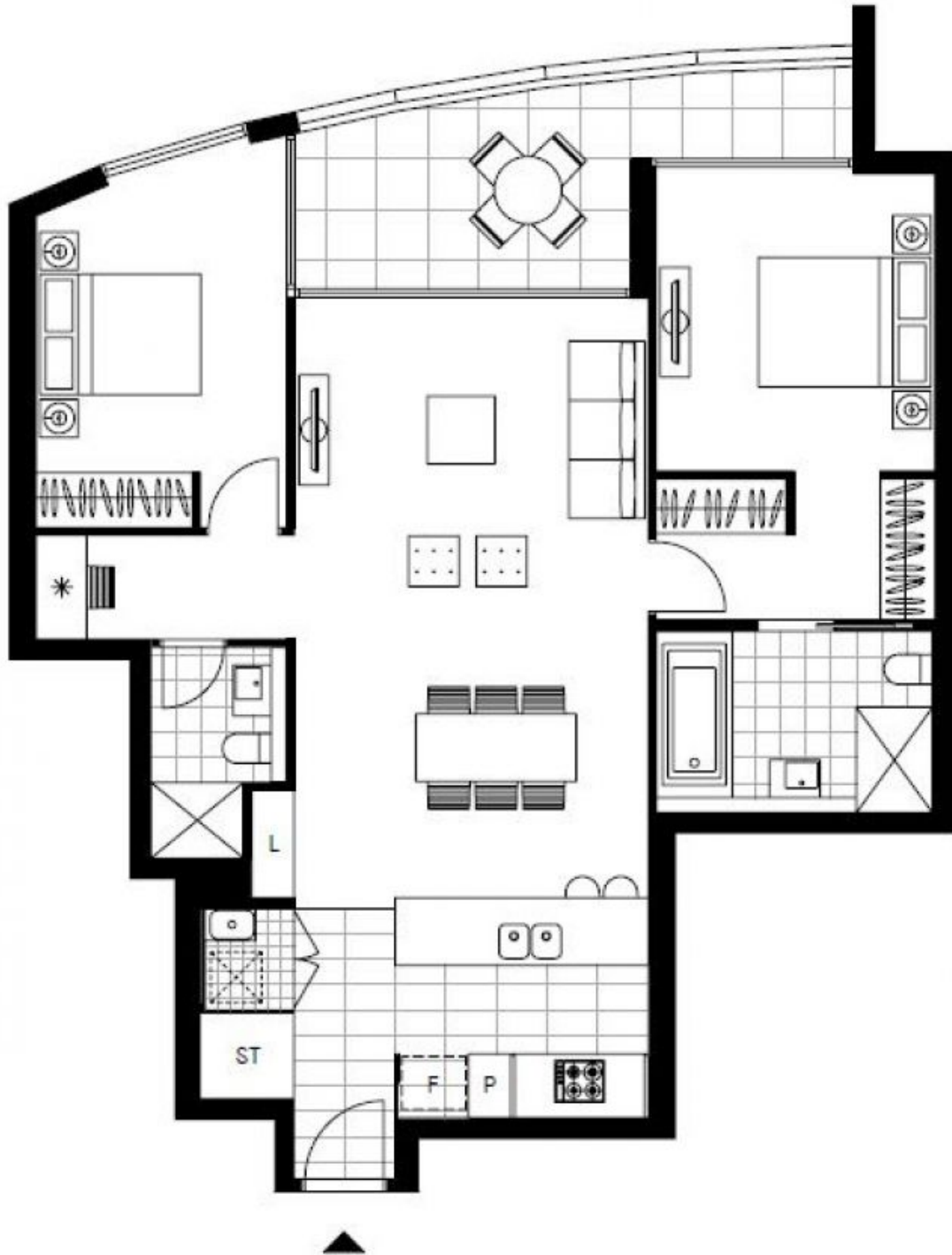
Contact: Carmen Whiteley
02 8588 8888
0497 555 519

Type: Apartment

Date Available: 19/06/2020

Bond: \$3400

<https://www.resbymirvac.com>



Plans shown are only indicative of layout. Dimensions are approximate.

ZETLAND, NSW
2205/6 Ebsworth Street