



## DOCKLANDS, VIC

1103/80 Lorimer Street

2  
BED

2  
BATH

2  
CAR



### Docklands Living At It's Best

One of the most popular 2 bedroom 2 bathroom floor plans on offer at Yarra's Edge. Situated above the tranquil Marina at Yarra's Edge this ultra modern apartment has it all. For the discerning entertainer it would be a choice of indoor dining from its spacious open plan areas or outdoor on the bright and sunny North facing balcony taking in the fabulous views of the Yarra River and Melbourne's everlasting backdrop of the CBD.

The kitchen features an abundance of storage, stone bench tops and quality stainless steel European appliances. The generous main bedroom includes balcony access with stunning views, walk through robes and en-suite with deep relaxing bath. The large second bedroom includes built in robes and has it's own adjacent bathroom. Featuring separate laundry, ducted Air-conditioning and Heating throughout, 2 secure car spaces and an overhead storage.

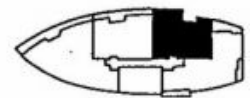
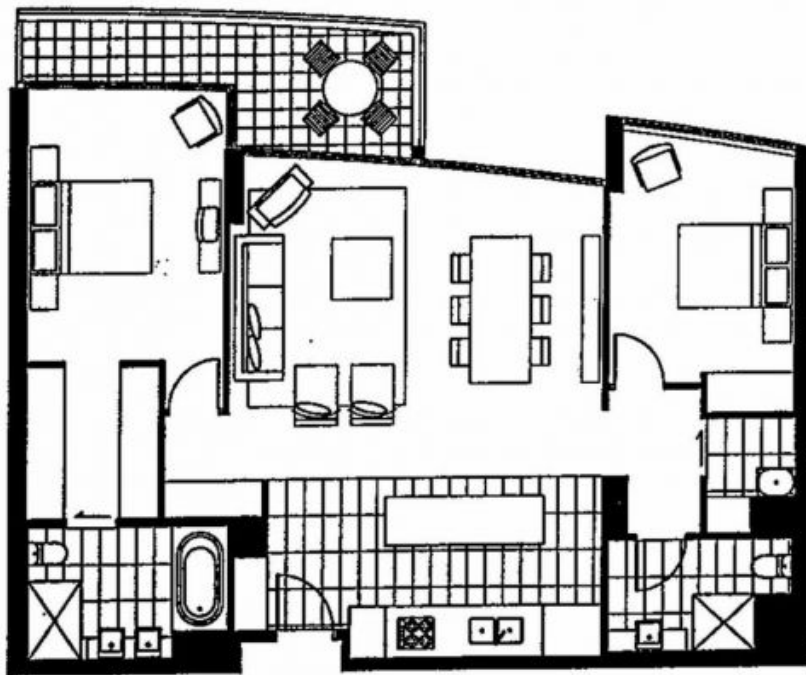
**\$950,000 - \$980,000**

**Contact:** Baden Lucas  
03 9645 1199  
0418 888 751

**Type:** Apartment

**Sold Date:** 31/07/2019

<https://www.resbymirvac.com>



Plans shown are only indicative of layout. Dimensions are approximate.

**DOCKLANDS, VIC**  
1103/80 Lorimer Street