



**EAST MELBOURNE, VIC**  
902/296 Victoria Parade

**1** BED **1** BATH **1** CAR



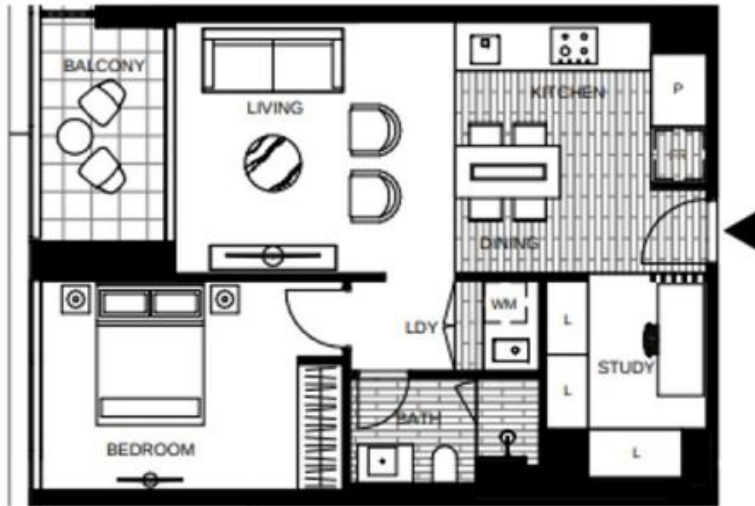
**The Eastbourne - 1 Bedroom Apartment plus study ? best views**

Be the first to call The Eastbourne home! Currently under construction and due for completion in June, ready for tenants to move in late-June / early-July.

Eastbourne is set to be an inner-city Eden, a heartbeat from the city, yet feeling like a million miles away. Located in East Melbourne, a neighbourhood of distinction, steeped in history and home to a privileged few.

Apartment features:  
? Bespoke design, quality construction and finishes

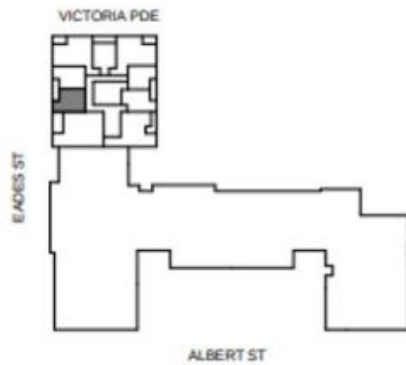
**\$650 per week**  
**Contact:** Baden Lucas  
03 9645 1199  
0418 888 751  
**Type:** Apartment  
**Date Available:** 01/07/2019  
**Leased Date:** 08/07/2019  
**Bond:** \$3900  
<https://www.resbymirvac.com>



LEVEL 7V,8V,9V,10V

- APT 7-02V
- APT 8-02V
- APT 9-02V
- APT 10-02V

**LOCATION PLAN**

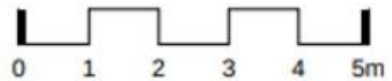


**APARTMENT  
1 BED 1 BATH + STUDY**



Internal Area 62m<sup>2</sup>  
 Balcony Area 6m<sup>2</sup>  
 Total Area 68m<sup>2</sup>

Areas subject to final survey, area includes balcony and/or terrace where applicable. It excludes parking and external storage areas.



Plans shown are only indicative of layout. Dimensions are approximate.

**EAST MELBOURNE, VIC**  
 902/296 Victoria Parade