



## DOCKLANDS, VIC

3302/90 Lorimer Street

3  
BED

2  
BATH

2  
CAR



### Immense Tower 5 Living with Spectacular Views

Showcasing a one of a kind floorplan in Tower 5 of Yarra's Edge, with an internal floor area of 203 sqm (approx.) plus an extremely spacious balcony with a wonderful northerly aspect allowing for magnificent views of the CBD, Yarra River, and beyond, this impeccable three bedroom, two bathroom apartment is one of the residential jewels of the Docklands precinct.

This 33rd floor stunner truly needs to be seen to be believed. The immense central lounge and dining zone is flooded with natural light and has more space than you'll know what to do with. Included in this huge central area is the state of the art kitchen which delivers quality stone surfaces, large island bench, and full stainless steel Miele appliances.

**\$1,120 per week**

**Contact:** Baden Lucas  
03 9645 1199  
0418 888 751

**Type:** Apartment

**Date Available:** 22/05/2019

**Leased Date:** 26/07/2019

**Bond:** \$6720

<https://www.resbymirvac.com>



Please note that this floor plan is a guide only and was prepared prior to completion. The information contained herein is believed to be correct but is not guaranteed. Dimensions are approximate. Changes will undoubtedly be made during development and dimensions, areas, fittings, finishes and specifications are subject to change without notice in accordance with the provisions of the contract of sale. The furniture depicted is not included with any sale. Prospective purchasers must rely on their own enquiries.

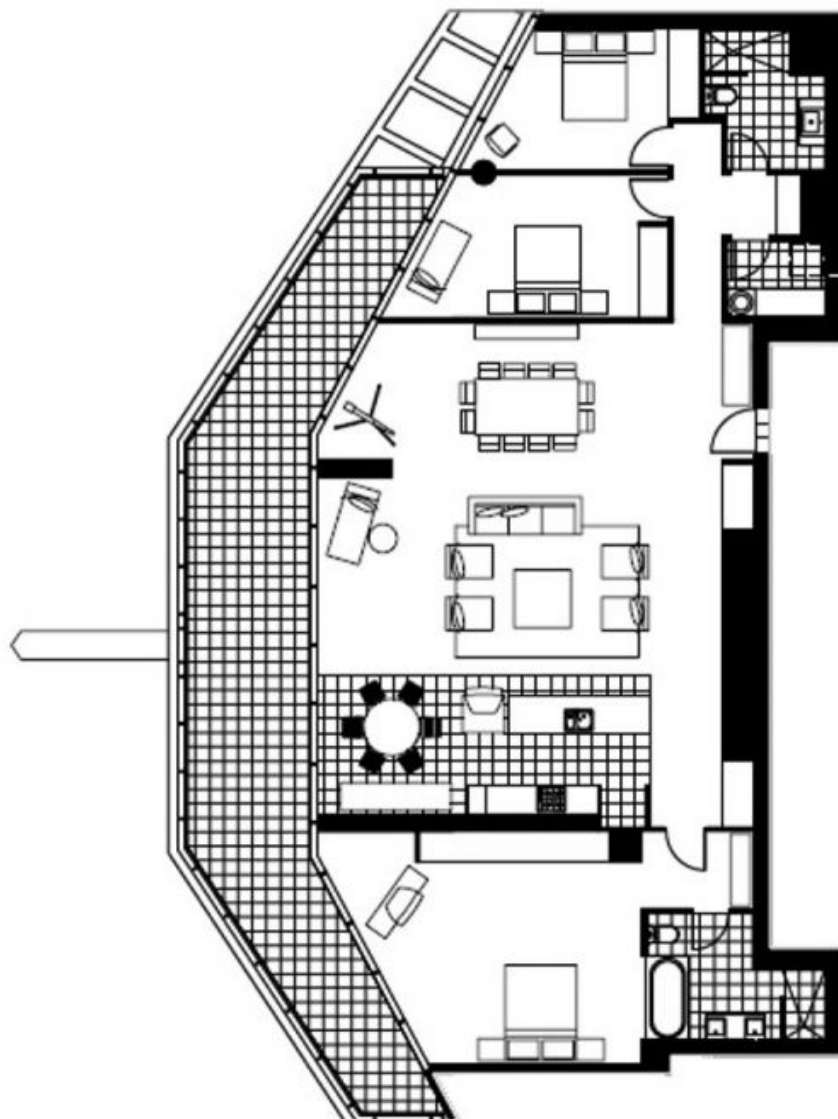
Living  
Meals  
Dining

4.6 x 6.5  
2.8 x 3.1  
3.0 x 6.5

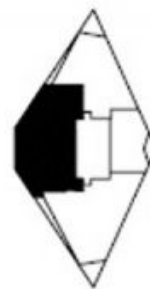
Bedroom 1  
Bedroom 2  
Bedroom 3

4.2 x 6.5  
3.0 x 3.5  
3.0 x 4.5

Plus Robe  
Plus Robe  
Plus Robe



Tower 5



Plans shown are only indicative of layout. Dimensions are approximate.

**DOCKLANDS, VIC**  
3302/90 Lorimer Street