



MARRICKVILLE, NSW

805/18 Lilydale Street

2 BED **2** BATH **1** CAR 

Private, Top Floor 2-Bedroom Apartment Available!

Welcome to Marrick & Co!

Designed to welcome true community living, residents will benefit from a library and community hub featuring shared spaces, a children's playground and cafe. At the centre of Marrick & Co in The Common, a tree lined lawn where you can gather for picnics, be active or lie back and relax.

This 91sqm, Bright and Sunny 2-Bedroom Apartment features;

- Modern kitchen with stone bench tops and built-in Smeg appliances
- Breakfast bar nook with internal garden views
- South-Facing entertainers' balcony, perfect for family functions

DEPOSIT TAKEN - FIRST INSPECTION!

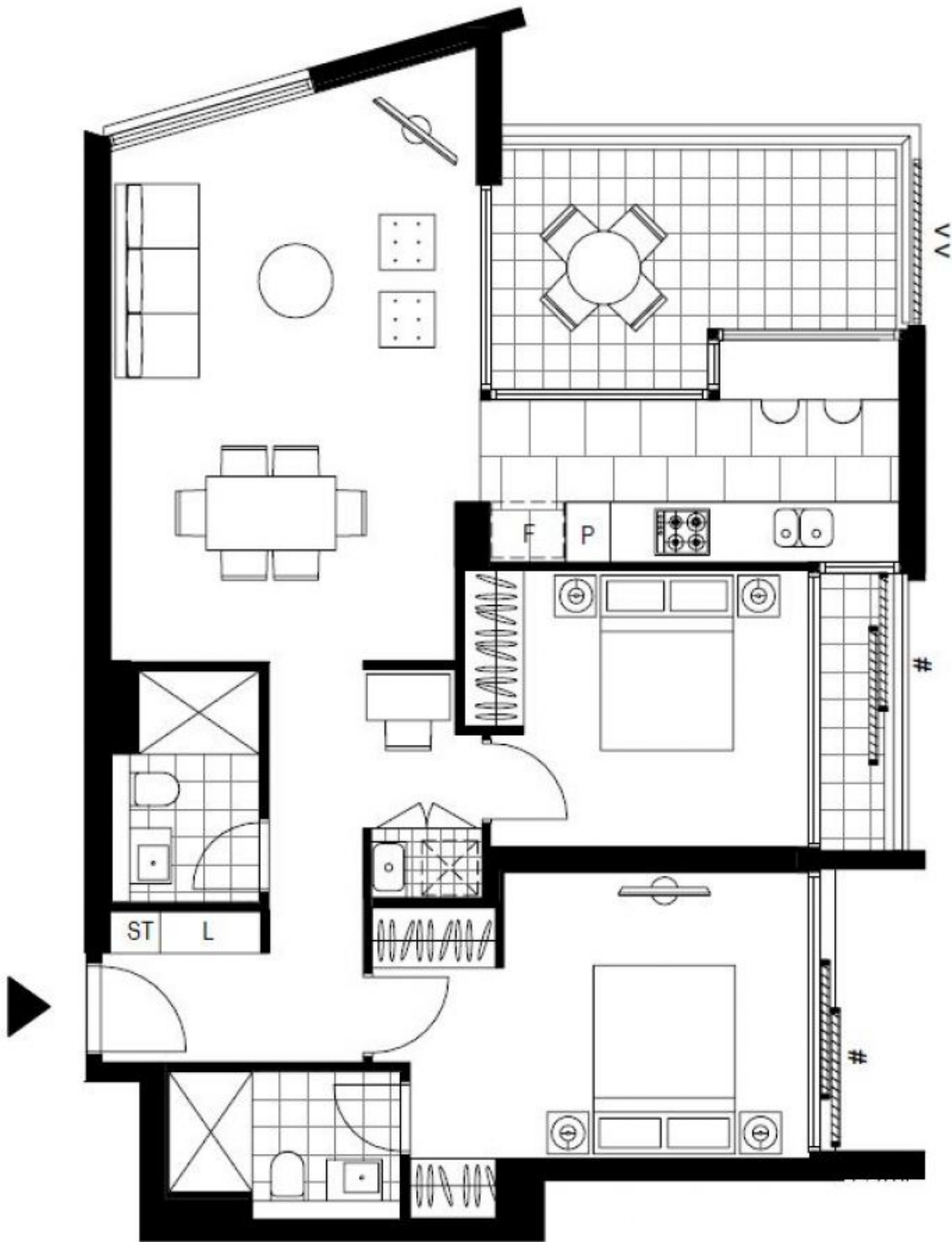
Contact: Carmen Whiteley
02 8588 8888
0497 555 519

Type: Apartment

Date Available: 06/10/2020

Bond: \$2880

<https://www.resbymirvac.com>



Plans shown are only indicative of layout. Dimensions are approximate.

MARRICKVILLE, NSW
805/18 Lilydale Street