

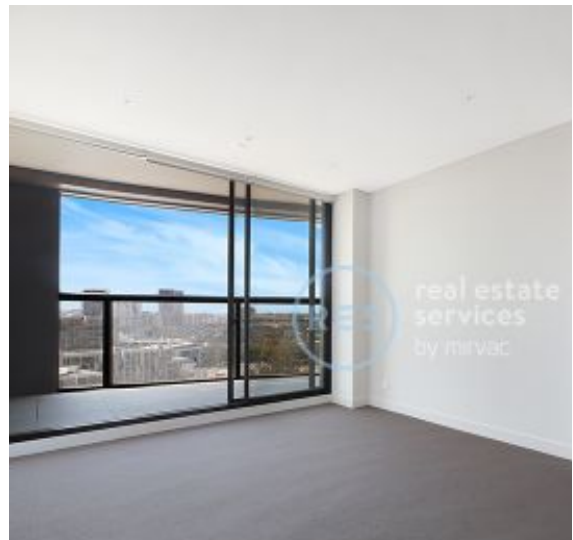
DEPOSIT TAKEN

More apartments available for lease in Green Square - Zetland!

Please call 0497 555 519 or email carmen.whiteley@resbymirvac.com for more information



GREEN SQUARE



ZETLAND, NSW 2008/6 Ebsworth Street

2
BED

2
BATH

1
CAR



Level 20, 2 Bedroom Apartment with Parking in Zetland

This 82sqm, 20th floor Apartment features:

- Large bedrooms with generous built-in wardrobes
- Open-plan living and dining area
- Contemporary kitchen with stone benchtops and Smeg appliances
- Sleek bathrooms with plenty of storage
- East-facing balcony with uninterrupted district views
- Internal laundry with dryer included
- Secure car space and storage cage included
- Ducted A/C, video intercom and NBN connectivity
- 300m to Woolworths, The Social Corner and Green Square Train Station (10mins to the City)

More Apartments Available!

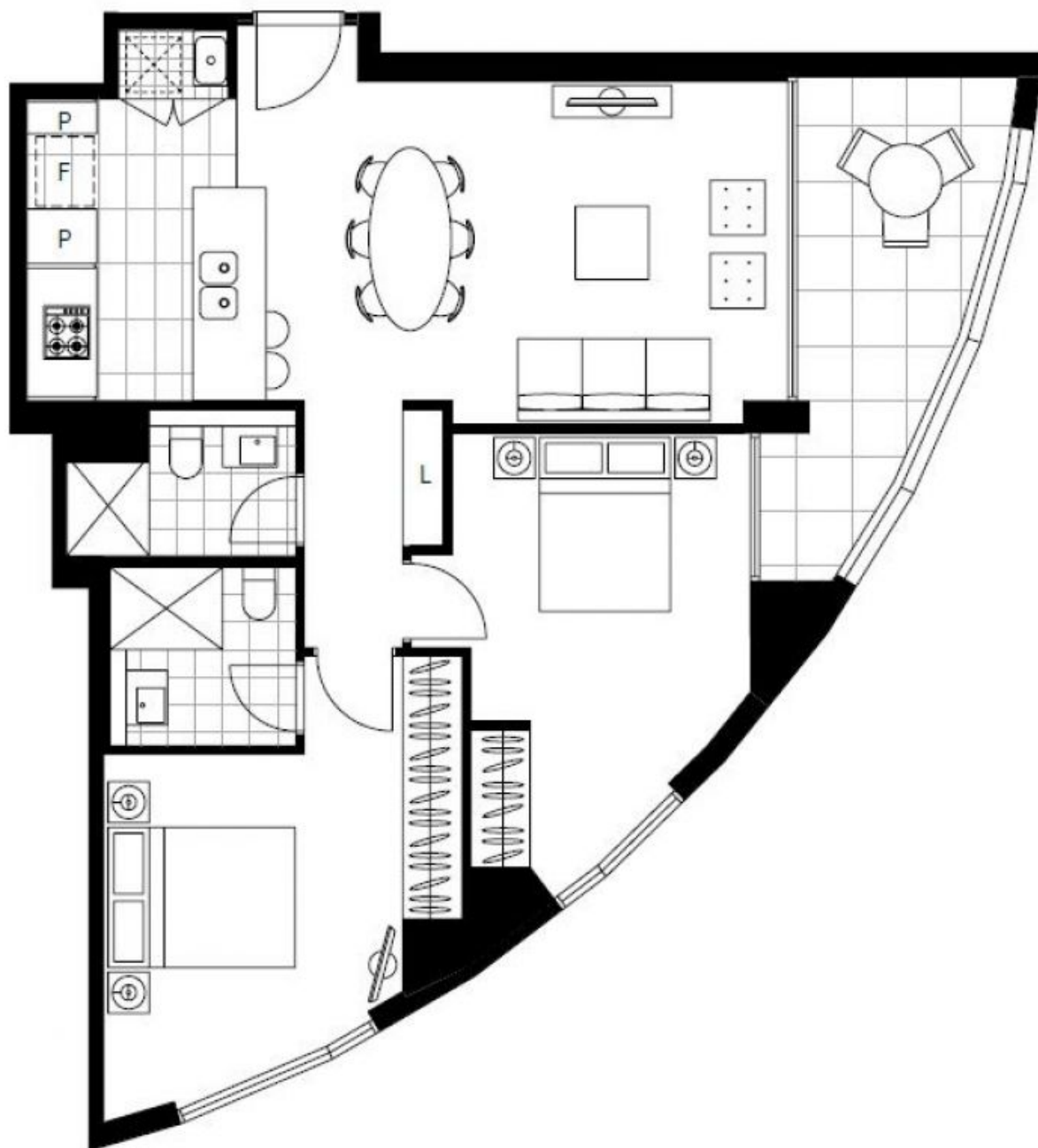
Contact: Carmen Whiteley
02 8588 8888
0497 555 519

Type: Apartment

Date Available: 28/07/2020

Bond: \$2880

<https://www.resbymirvac.com>



Plans shown are only indicative of layout. Dimensions are approximate.

ZETLAND, NSW
2008/6 Ebsworth Street