



EAST MELBOURNE, VIC
704/296 Victoria Parade

2 BED **2** BATH **2** CAR



The Eastbourne - brand-new, 2-bedroom, corner apartment with all the upgrades!
Be the first to call The Eastbourne home!

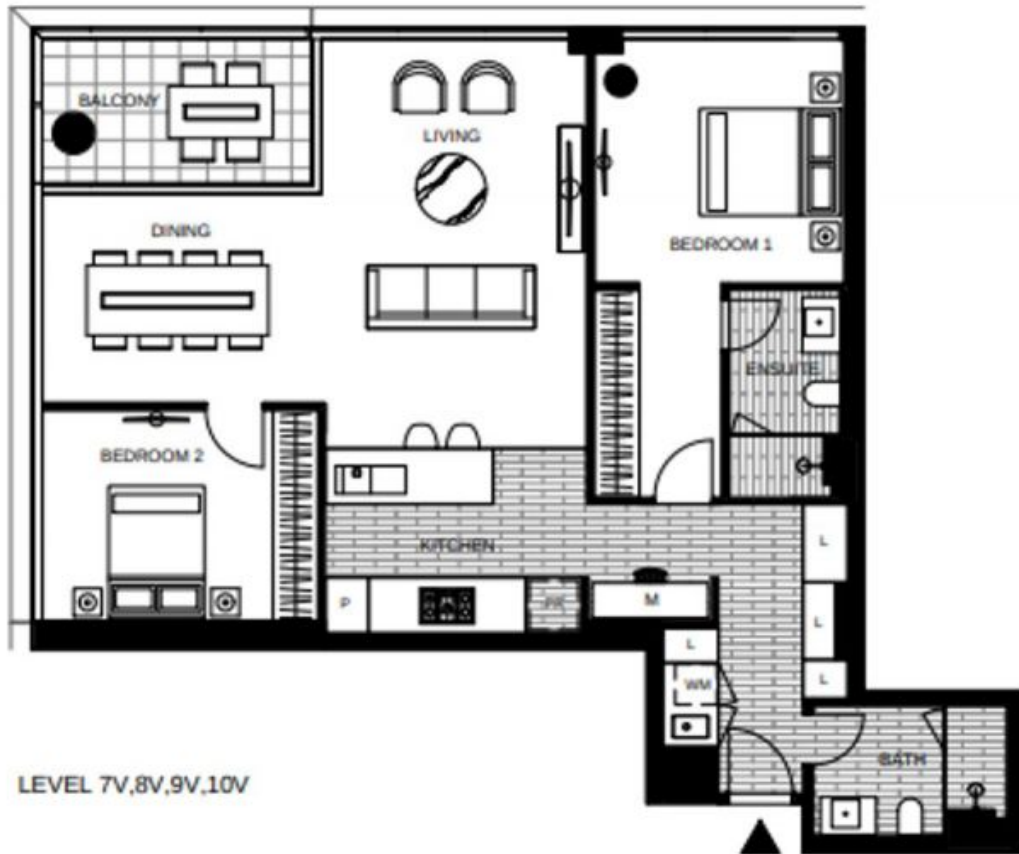
\$950 per week
Contact: Baden Lucas
03 9645 1199
0418 888 751

Eastbourne is an inner-city Eden, a heartbeat from the city, yet feeling like a million miles away.

Type: Apartment
Date Available: 01/07/2019
Leased Date: 29/08/2019
Bond: \$4128
<https://www.resbymirvac.com>

Located in East Melbourne, The Eastbourne has set a new benchmark for luxury living in Melbourne.

- Apartment features:
- ? Bespoke design, quality construction and finishes
 - ? Internal space of 107m²



LEVEL 7V,8V,9V,10V

APT 7-04V
APT 8-04V
APT 9-04V
APT 10-04V

LOCATION PLAN

APARTMENT
2 BED 2 BATH + MEDIA

Internal Area 107m²
Balcony Area 9m²

Total Area 116m²

Areas subject to final survey, area includes balcony and/or terrace where applicable. It excludes parking and external storage areas.

Plans shown are only indicative of layout. Dimensions are approximate.

EAST MELBOURNE, VIC
704/296 Victoria Parade