

**EAST MELBOURNE, VIC**  
702/296 Victoria Parade

**1** BED **1** BATH **1** CAR

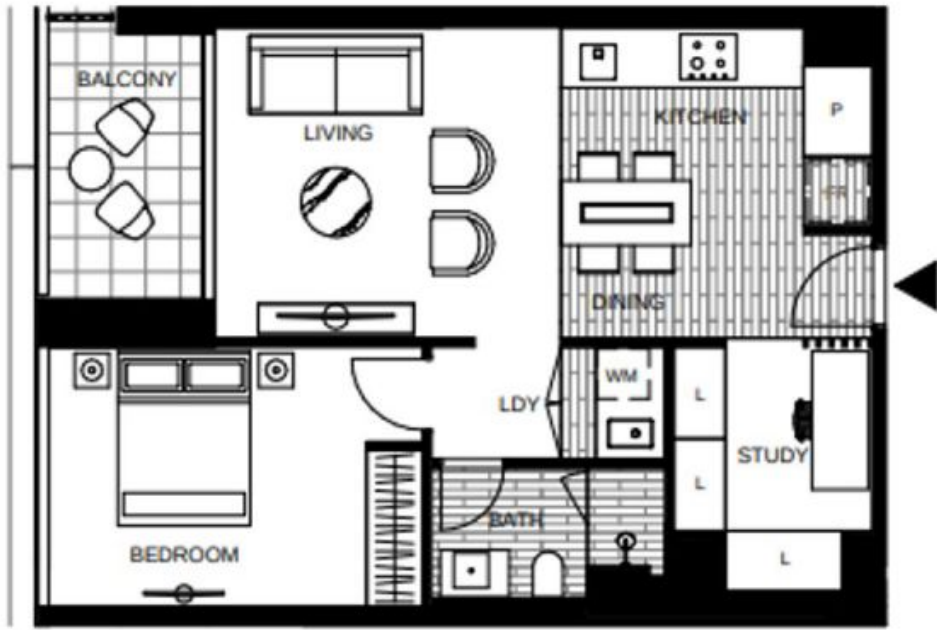


**The Eastbourne - 1 Bedroom Apartment plus study**  
Be the first to call The Eastbourne home! Currently under construction and due for completion in June, ready for tenants to move in late-June / early-July.

Eastbourne is set to be an inner-city Eden, a heartbeat from the city, yet feeling like a million miles away. Located in East Melbourne, a neighbourhood of distinction, steeped in history and home to a privileged few.

- Apartment features:
- ? Bespoke design, quality construction and finishes
  - ? Internal space of 62m2

**\$650 per week**  
**Contact:** Baden Lucas  
 03 9645 1199  
 0418 888 751  
**Type:** Apartment  
**Date Available:** 01/07/2019  
**Leased Date:** 08/07/2019  
**Bond:** \$2824  
<https://www.resbymirvac.com>



LEVEL 7V,8V,9V,10V

### LOCATION PLAN

VICTORIA PDE

EADES ST

ALBERT ST

### APARTMENT

#### 1 BED 1 BATH + STUDY

Internal Area	62m <sup>2</sup>
Balcony Area	6m <sup>2</sup>
<b>Total Area</b>	<b>68m<sup>2</sup></b>

Areas subject to final survey, area includes balcony and/or terrace where applicable. It excludes parking and external storage areas.

Plans shown are only indicative of layout. Dimensions are approximate.

**EAST MELBOURNE, VIC**  
702/296 Victoria Parade