

ZETLAND, NSW

208/6 Ebsworth Street

1
BED

1
BATH



North Facing 1-Bedroom Apartment near Green Square Train Station

This 63sqm, Mirvac Apartment features:

- Large bedroom with generous built-in wardrobe
- Study nook at entry with built-in desk, perfect for a home office
- Generous living and dining area, leading to the balcony
- Contemporary kitchen with stone benchtop and Smeg appliances
- Sleek bathroom with plenty of storage
- North-facing balcony, perfect for entertaining
- Internal laundry with dryer included
- Secure storage cage included
- Ducted A/C, video intercom and NBN connectivity
- 300m to Woolworths, The Social Corner and Green Square Train Station (10mins to the City)

DEPOSIT TAKEN - More apartments available!

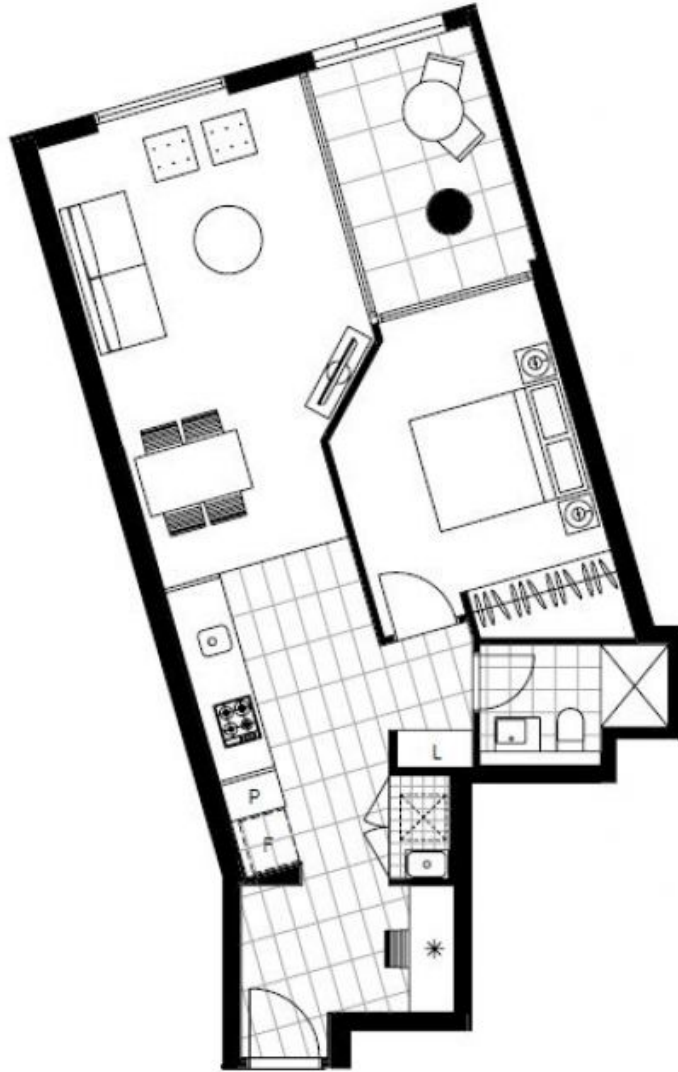
Contact: Carmen Whiteley
02 8588 8888
0497 555 519

Type: Apartment

Date Available: 11/12/2020

Bond: \$1800

<https://www.resbymirvac.com>



LEVEL 2

Plans shown are only indicative of layout. Dimensions are approximate.

ZETLAND, NSW
208/6 Ebsworth Street