



## DOCKLANDS, VIC

902/50 Lorimer Street

3  
BED

2  
BATH

2  
CAR



### City Views, Space and Lifestyle

An abundance of space, views and ideal location for your city lifestyle. This three-bedroom, two-bathroom Yarra's Edge oasis is one not to be missed off your list.

There is ample of space offered by the open plan lounge and dining area, this large living area also incorporates a spacious stone kitchen with island bench and stainless-steel appliances, while the balcony runs the entire length of the apartment.

All bedrooms have balcony access with the master bed with a dedicated ensuite, while the central bathroom is share by the other two bedrooms. A Euro laundry, ducted heat/cool, video intercom, and 2 car spaces. You will also as a resident have access to RekDek incl. gym, pool, spa, steam room, & sauna are other features.

### \$935 per week

**Contact:** Baden Lucas  
03 9645 1199  
0418 888 751

**Type:** Apartment

**Date Available:** 03/06/2019

**Leased Date:** 17/06/2019

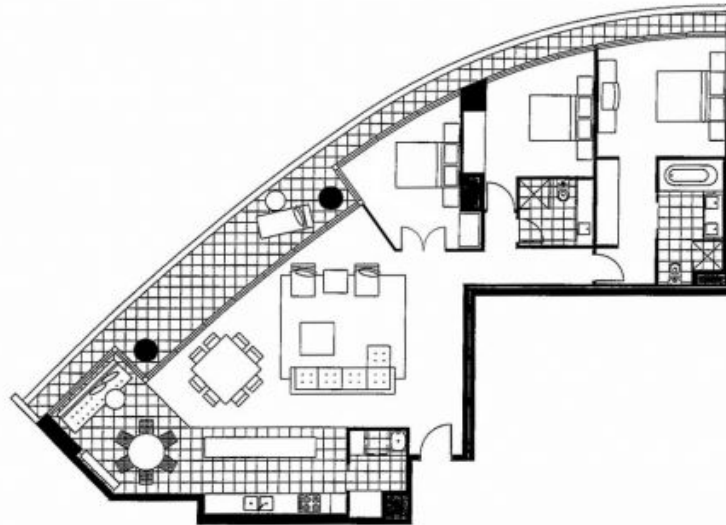
**Bond:** \$5610

<https://www.resbymirvac.com>

Living	5.2 x 5.6	Bedroom 1	3.5 x 3.8	Plus Robe
Dining	3.0 x 3.5	Bedroom 2	3.4 x 3.2	Plus Robe
Breakfast	3.1 x 3.0			

Please note that this floor plan is a guide only.  
The information contained herein is not guaranteed.  
Dimensions are approximate. Prospect purchasers  
must rely on their own enquiries.

Tower 1  
Apartment 02  
Level 8 - 29  
Lifestyle Option



Plans shown are only indicative of layout. Dimensions are approximate.

**DOCKLANDS, VIC**  
902/50 Lorimer Street