



## EAST MELBOURNE, VIC

2 Bedroom Apt/296 Victoria Pde

**2** BED **2** BATH **1** CAR



### The Eastbourne - 2 Bedroom Apartments ? Available July

Be the first to call The Eastbourne home!

Eastbourne is set to be an inner-city Eden, a heartbeat from the city, yet feeling like a million miles away. Located in East Melbourne, a neighbourhood of distinction, steeped in history and home to a privileged few.

Apartments feature:

- ? Bespoke design, quality construction and finishes
- ? Internal space of up to 137m2
- ? Stainless steel European appliances
- ? Generous cupboard space

### Contact Agent

**Contact:** Baden Lucas  
03 9645 1199  
0418 888 751  
Property Management

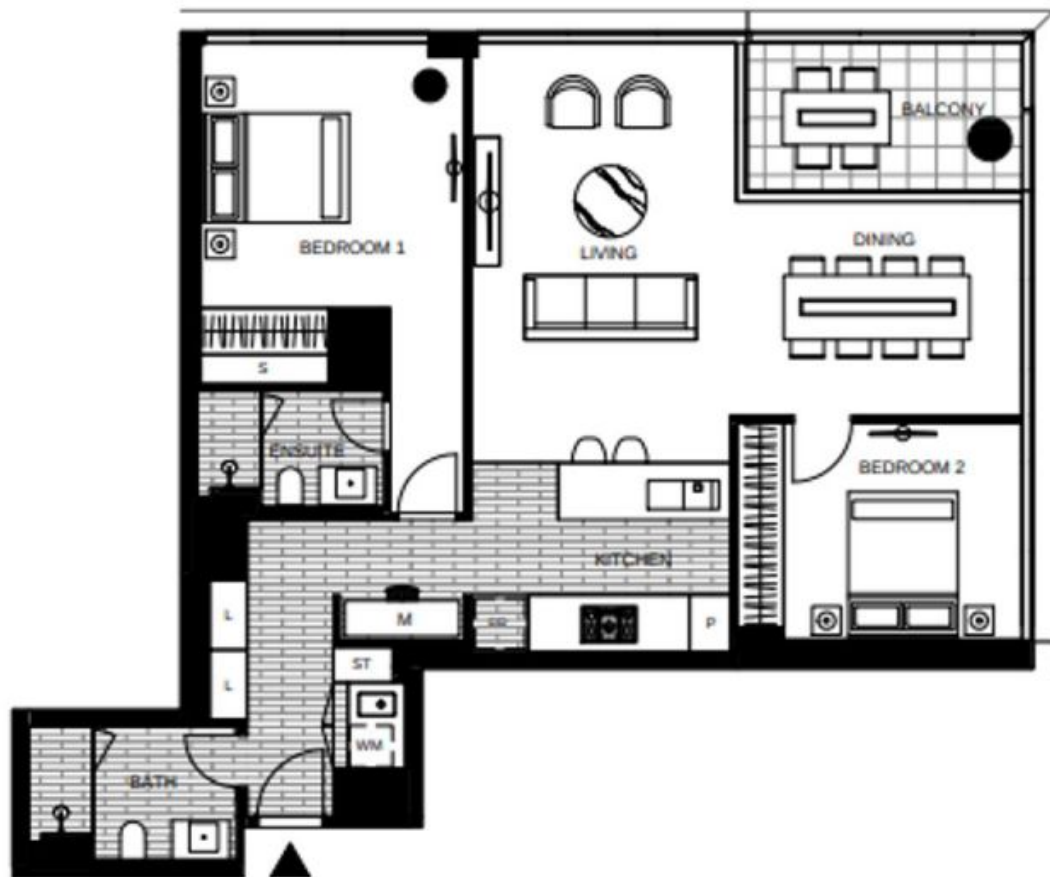
**Type:** Apartment

**Date Available:** 01/07/2019

**Leased Date:** 16/09/2019

**Bond:** \$5400

<https://www.resbymirvac.com>



LEVEL 7V, 8V, 9V, 10V

APT 7-06V  
APT 8-06V  
APT 9-06V  
APT 10-06V

#### LOCATION PLAN



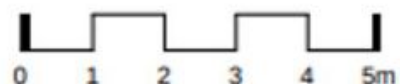
#### APARTMENT 2 BED 2 BATH + MEDIA



Internal Area 107m<sup>2</sup>  
Balcony Area 8m<sup>2</sup>

Total Area 115m<sup>2</sup>

Areas subject to final survey, area includes balcony and/or terrace where applicable. It excludes parking and external storage areas.



Plans shown are only indicative of layout. Dimensions are approximate.

**EAST MELBOURNE, VIC**  
2 Bedroom Apt/296 Victoria Pde