



BONDI, NSW
3301/38 Wellington Street

2 BED **2** BATH **1** CAR 

Spacious 2-Bedroom Apartment with partial ocean views!

This 108sqm, 2-Bedroom Apartment features:

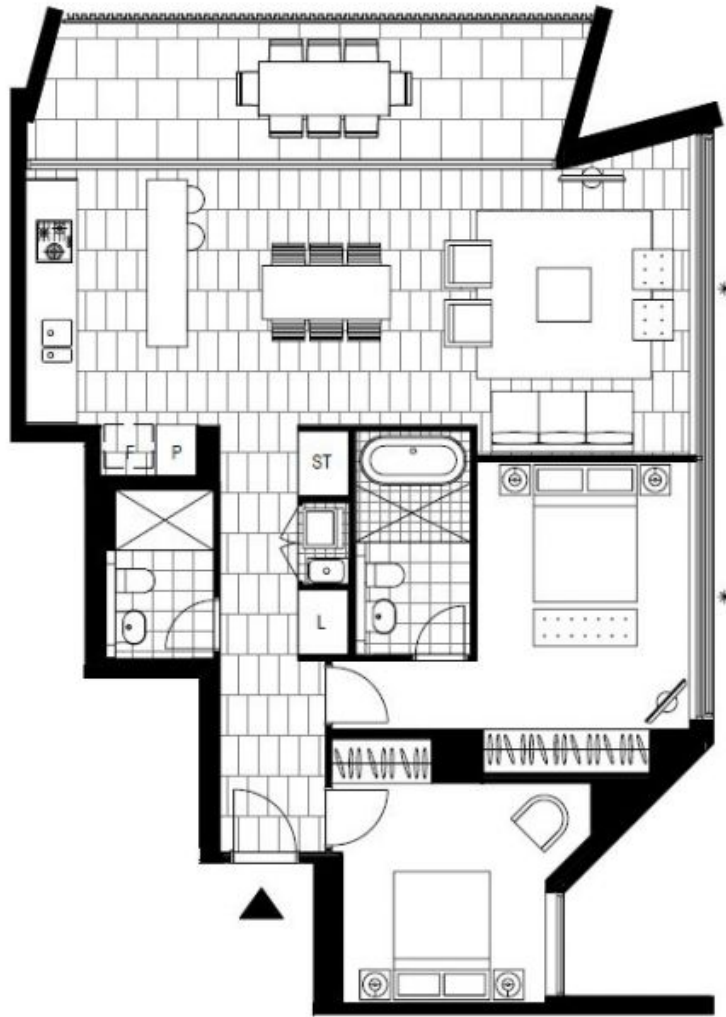
- Well-appointed bedrooms with generous built-in wardrobes
- Tiled living and dining area, leading to the balcony
- Stylish kitchen with stone benchtops and Miele appliances
- Sleek bathrooms with plenty of vanity storage, bath in ensuite
- North-facing balcony overlooking the park, perfect for entertaining
- Internal laundry with washer and dryer included
- Secure car space and storage cage included
- Ducted A/C, video intercom and NBN connectivity
- 1.5km walk to the iconic Bondi Beach, 300m to public transport

DEPOSIT TAKEN

Contact: Carmen Whiteley
02 8588 8888
0497 555 519

Type: Apartment
Date Available: 13/05/2019

Bond: \$4600
<https://www.resbymirvac.com>



Plans shown are only indicative of layout. Dimensions are approximate.

BONDI, NSW
3301/38 Wellington Street