



## DOCKLANDS, VIC

703/81 South Wharf Drive

**2** **2** **2** **RES**  
BED BATH CAR

### Spacious Double Story Apartment

Located on the podium level of the newest Mirvac Tower - Forge, this unique double story, spacious, and utterly modern two bedroom, two bathroom Docklands apartment promises dazzling views of the Yarra River and city skyline as well as two secure car spaces. Features brilliant views from relaxed lounge and dining and undercover balcony, gourmet kitchen with stone benches, and s/steel appliances, all bedrooms with BIRs including master bedroom with ensuite, pristine bathroom, separate laundry, study nook, and access to a gym, pool caf?, private kitchen/dining room and cinema. Walk to South Wharf Promenade and Victoria Harbour precinct.

### \$730 per week

**Contact:** Baden Lucas  
03 9645 1199  
0418 888 751

**Type:** Apartment

**Date Available:** 03/05/2019

**Leased Date:** 24/05/2019

**Bond:** \$4380

<https://www.resbymirvac.com>

# 703/81 South Wharf Drive, Docklands

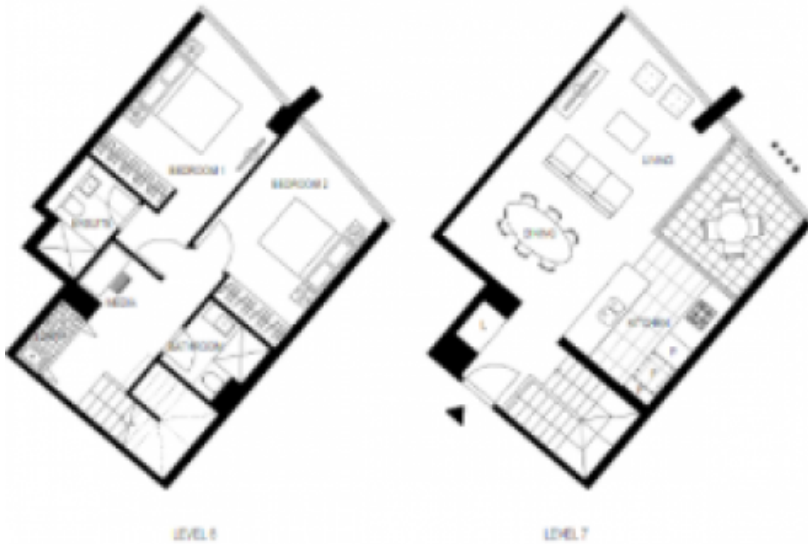
2 Bed | 2 Bath | 2 Car

## Level 7

- Dual level home
- Spectacular river views
- Island bench
- Winter garden

For more information, please contact:

Alisha Clark  
0491 174 507  
alisha.clark@dnbbymirvac.com



Plans shown are only indicative of layout. Dimensions are approximate.

**DOCKLANDS, VIC**  
703/81 South Wharf Drive