



GLEBE, NSW

306/2 Scotsman Street

1
BED

1
BATH



DEPOSIT TAKEN!

This 66sqm, 3rd floor Apartment features:
Impressive 1-Bedroom Apartment in Harold Park

- Large bedroom with built-in wardrobe
- Open-plan living and dining area
- Modern kitchen with Miele appliances
- Sleek bathroom with plenty of storage
- Internal laundry with washer and dryer included
- Study nook, perfect for a home office
- Secure storage cage included
- Ducted A/C, video intercom and NBN connectivity
- 300m to the Tramsheds, light rail station and public transport

DEPOSIT TAKEN

Contact: Matthew Matthews
02 8588 8888
0418 266 590
Naz Sabzpouri
02 8588 8888
0401 545 440

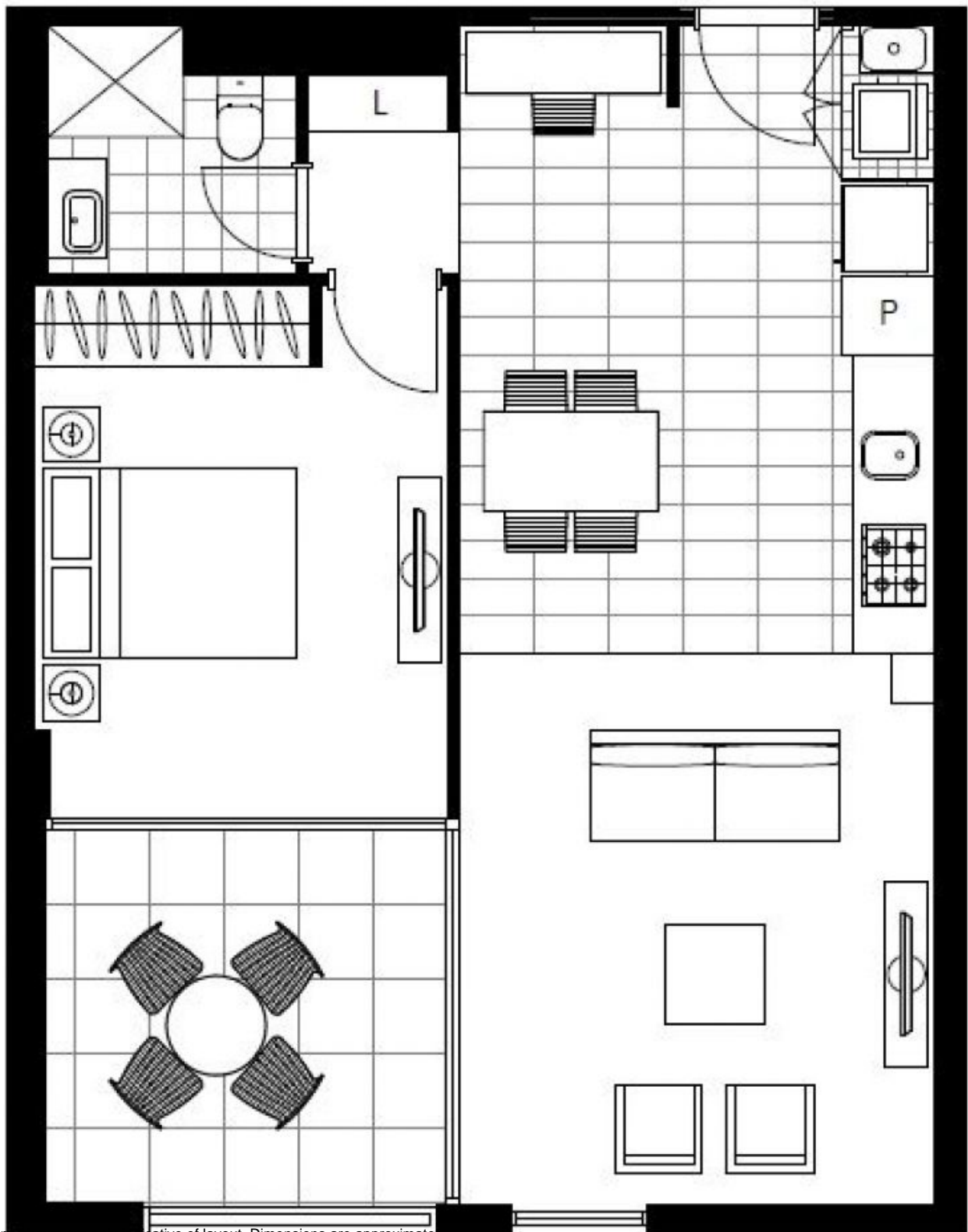
Type: Apartment

Date Available: 09/05/2019

Bond: \$2320

<https://www.resbymirvac.com>

For more information, please contact Real Estate Services by Mirvac on 02 8588 8888 or email enquiries@resbymirvac.com - Your Onsite Agent!



Plans shown are only indicative of layout. Dimensions are approximate.

GLEBE, NSW
306/2 Scotsman Street