



GLEBE, NSW

7701/2 Cullen Close

1
BED

1
BATH



Huge layout at 73sqm | Study nook, perfect for home office

This 73sqm, 7th floor Apartment offers:

Garden view 1-Bedroom Apartment in Harold Park

- Large bedroom with built-in wardrobe
- Balcony with views over the internal gardens
- Stone benchtops and Miele appliances in kitchen
- Sleek bathroom with plenty of storage
- Open plan living and dining area
- Study nook, perfect for a home office
- Internal laundry with washer and dryer included
- Secure basement storage cage included

\$560 per week | 73sqm

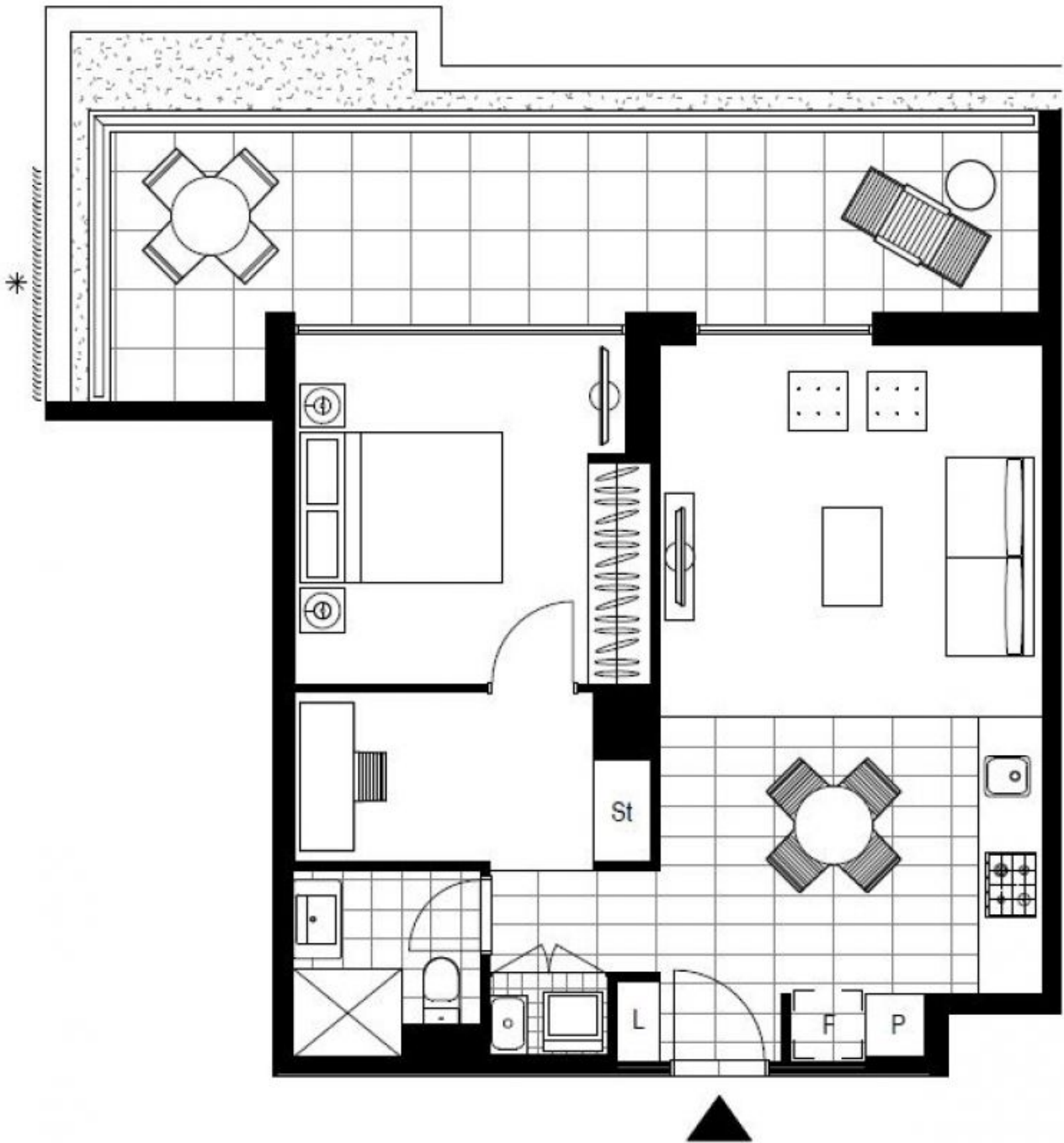
Contact: Matthew Matthews
02 8588 8888
0418 266 590

Type: Apartment

Date Available: 06/05/2020

Bond: \$2240

<https://www.resbymirvac.com>



Plans shown are only indicative of layout. Dimensions are approximate.

GLEBE, NSW
7701/2 Cullen Close