



## ZETLAND, NSW

809/28 Ebsworth Street

**2** BED **2** BATH **1** CAR 

### Sunny 2-Bedroom Apartment with Parking in Zetland

This 91sqm, 2-Bedroom Apartment features:

- Large bedrooms with floor to ceiling built-in wardrobes
- Open-plan living and dining area flowing onto balcony
- Hidden study nook with built-in desk
- Modern kitchen with stone benchtops and Smeg appliances
- Stylish bathrooms with plenty of storage
- South-west facing balcony, access from living and second bedroom
- Internal laundry with dryer included
- Secure basement car space included
- Ducted A/C, video intercom and NBN connectivity
- 300m to Woolworths, The Social Corner and Green Square Train Station

### DEPOSIT TAKEN

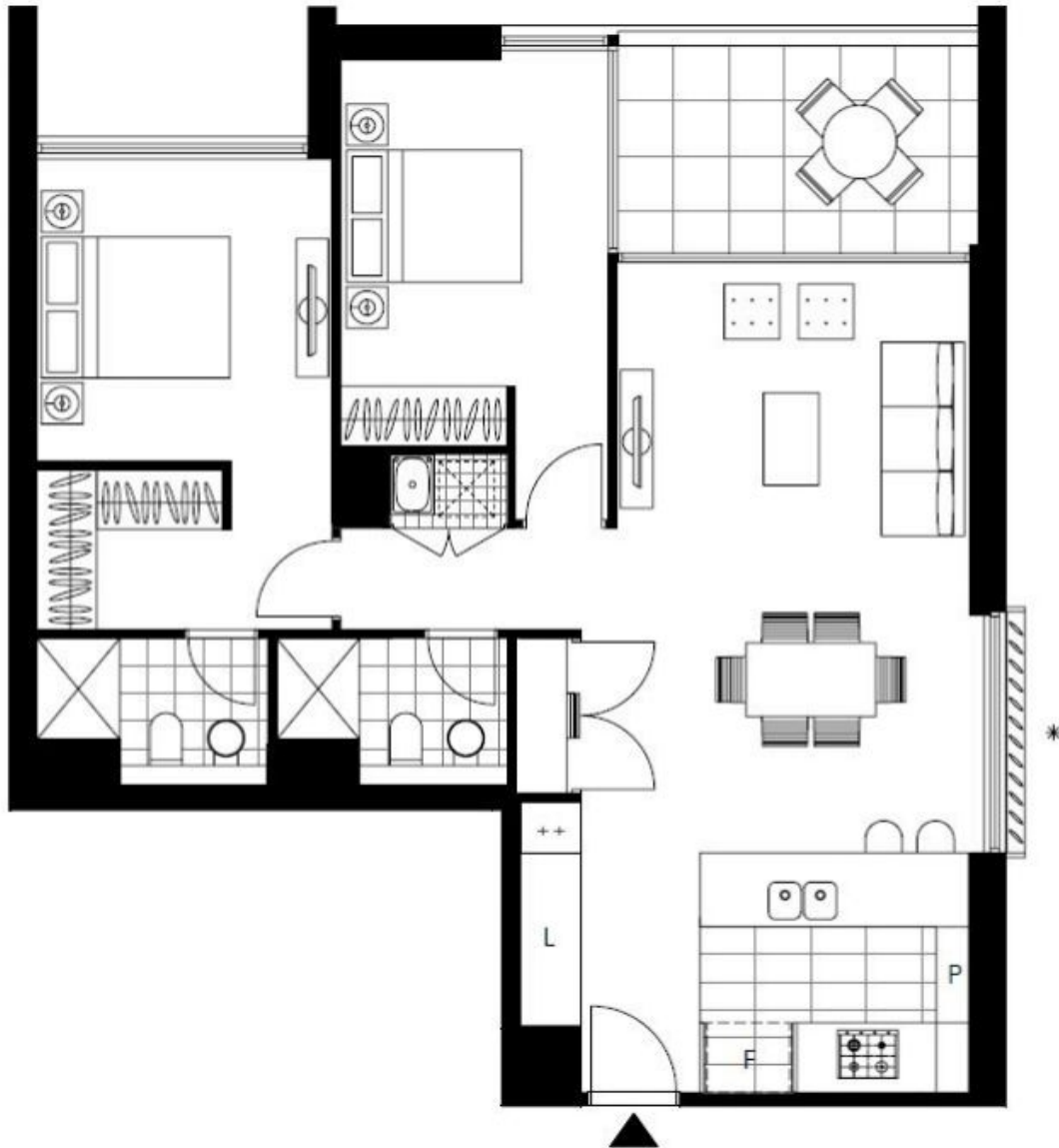
**Contact:** Carmen Whiteley  
02 8588 8888  
0497 555 519

**Type:** Apartment

**Date Available:** 04/05/2019

**Bond:** \$3320

<https://www.resbymirvac.com>



Plans shown are only indicative of layout. Dimensions are approximate.

**ZETLAND, NSW**  
809/28 Ebsworth Street