



DOCKLANDS, VIC

1701/80 Lorimer Street

3
BED

2
BATH

2
CAR



Pure splendour in Docklands premier residential precinct - FULLY FURNISHED

Offering Panoramic views over Port Phillip Bay, Yarra River, Victoria Harbour and the CBD, how could you resist this stunning three bedroom FULLY FURNISHED apartment at Yarra's Edge. During the day this wonderful apartment is bathed in natural sunlight and by night you will be mesmerized by the magnificence of Melbourne's CBD city skyline and the lights framing Port Phillip Bay. Full size open living area will suit the entertainer in you and if you love to cook, the gourmet kitchen includes a symphony of quality Smeg stainless steel appliances, stone bench top finishes, and integrated fridge/freezer. Wake up with views from the main bedroom overlooking the Marina and CBD whilst the two further bedrooms offer generous proportions and built in robes. A central bathroom smartly sits adjacent and a further separate power room with European laundry complete this expansive floor plan.

\$1,200 per week

Contact: Baden Lucas
03 9645 1199
0418 888 751

Type: Apartment

Date Available: 26/04/2019

Leased Date: 31/05/2019

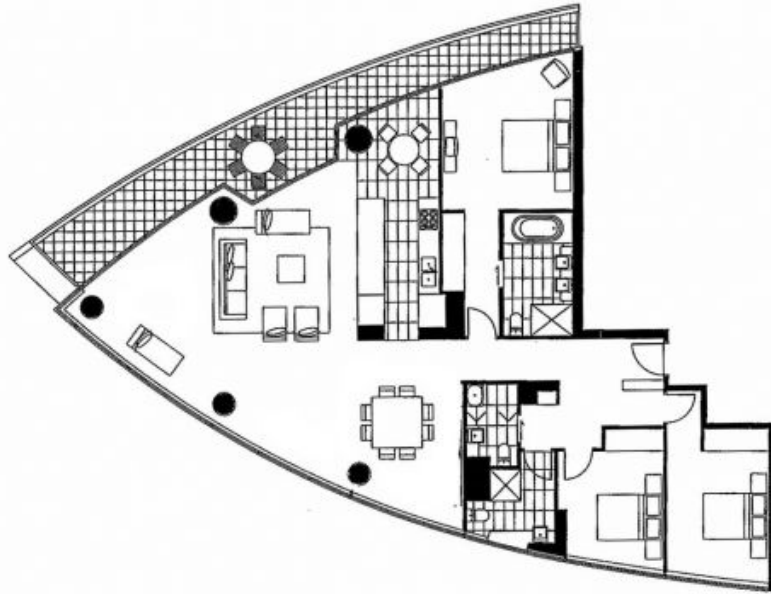
Bond: \$7200

<https://www.resbymirvac.com>

Living	4.4 x 6.6	Bedroom 1	3.6 x 4.1	Plus Robe
Dining	2.9 x 3.5	Bedroom 2	3.0 x 3.6	Plus Robe
Kitchen	2.0 x 2.7	Bedroom 3	3.1 x 3.2	Plus Robe

Please note that this floor plan is a guide only. The information contained herein is not guaranteed. Dimensions are approximate. Prospect purchasers must rely on their own enquiries.

Tower 4
Apartment 01



Plans shown are only indicative of layout. Dimensions are approximate.

DOCKLANDS, VIC
1701/80 Lorimer Street