



DOCKLANDS, VIC
410/81 South Wharf Drive

1 BED **1** BATH **1** CAR



Loft Style Apartment

Forge is one of Mirvac's newest luxury waterfront address located along the prestigious Yarra's Edge precinct. The loft design is modern and well-appointed. The bedroom and bathroom are located on the 1st level with the open plan living/dining, kitchen, laundry and balcony located on the 2nd level. Expansive glazing creates light-filled living environments on both upper and lower levels. The modern interiors feature gourmet kitchens complemented by European appliances and designer bathrooms finessed with chic fittings and luxe matt and metallic finishes.

Forge residents will enjoy spaces that extend their personal living environment. A private dining room and cinema can be reserved by residents who want to elevate their gathering with plush surrounds and cityscape views in addition to the luxurious state-of-the-art health and wellbeing facility 'Wharf Club' to be housed beneath an inclined grass roof. It will be complemented by a caf? overlooking the water as well as the

Wharf's Landing Park.

We welcome your inspection.

\$550 per week

Contact: Baden Lucas
03 9645 1199
0418 888 751

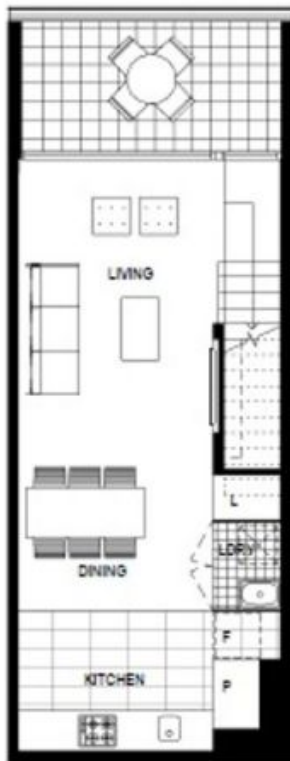
Type: Apartment

Date Available: 26/04/2019

Leased Date: 01/05/2019

Bond: \$3300

<https://www.resbymirvac.com>



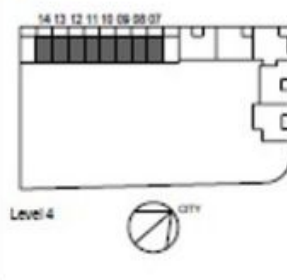
LEVEL 3



LEVEL 4

- APT 4.07
- APT 4.08
- APT 4.09
- APT 4.10
- APT 4.11
- APT 4.12
- APT 4.13
- APT 4.14

LOCATION PLAN



PODIUM LOFT 1 BEDROOM

Internal Area	81 m ²
Balcony Area	10 m ²
Total Area	91 m ²

Areas subject to final survey, area includes parking spaces unless otherwise specified. A maximum parking area relative storage area.



Plans shown are only indicative of layout. Dimensions are approximate.

Plans shown are only indicative of layout. Dimensions are approximate.

Plans shown are only indicative of layout. Dimensions are approximate.

For further enquiries call 03 9595 9400 or visit www.mirvac.com/forge



Plans shown are only indicative of layout. Dimensions are approximate.

DOCKLANDS, VIC
410/81 South Wharf Drive