

GLEBE, NSW

5301/148 Ross Street

1
BED

1
BATH



DEPOSIT TAKEN!

This 51sqm, 3rd floor Apartment offers:

- Garden Facing 1-Bedroom Apartment in Harold Park
- Large bedroom with floor to ceiling built-in wardrobe
- Balcony with views over the internal gardens
- Stone benchtops and Miele appliances in kitchen
- Contemporary bathroom with vanity storage
- Open plan, tiled living and dining area
- Internal laundry with washer and dryer included
- Secure basement storage cage included
- Ducted air Conditioning, video intercom and NBN connectivity
- 300m walk to buses, the light rail and the Tramsheds

DEPOSIT TAKEN

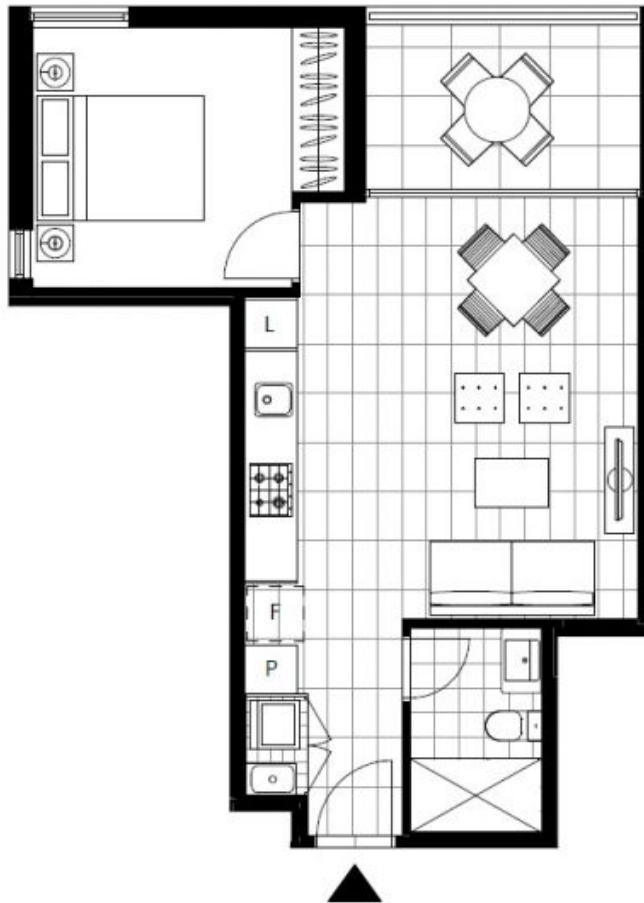
Contact: Matthew Matthews
02 8588 8888
0418 266 590
Naz Sabzpouri
02 8588 8888
0401 545 440

Type: Apartment

Date Available: 18/04/2019

Bond: \$2260

<https://www.resbymirvac.com>



LEVEL 3

Plans shown are only indicative of layout. Dimensions are approximate.

GLEBE, NSW
5301/148 Ross Street