



## DOCKLANDS, VIC

1705/81 South Wharf Drive

2  
BED

2  
BATH

1  
CAR



### Unforgettable views and modern luxury

Introducing you to the luxurious Forge complex and this outstanding 2 bedroom, 2 bathroom apartment, which redefines contemporary Docklands living while promising a superb location in the coveted Yarra's Edge. Forge offers residents brilliant facilities which include a Wharf's Club with gym, pool and cafe as well as a private kitchen/dining room and cinema.

- ? Features an appealing northern orientation
- ? Enjoy stunning views of the Yarra River and iconic CBD
- ? Relaxed undercover balcony best place to take in the scenic vistas
- ? Sizeable living and meals with full windows allows for terrific views
- ? Stone kitchen boasts mirrored splashback and Smeg appliances
- ? Bedrooms with BIRs includes master bed with chic ensuite

### Contact Agent

**Contact:** Baden Lucas  
03 9645 1199  
0418 888 751  
Baden Lucas  
03 9645 1199  
0418 888 751

**Type:** Apartment

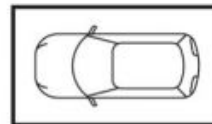
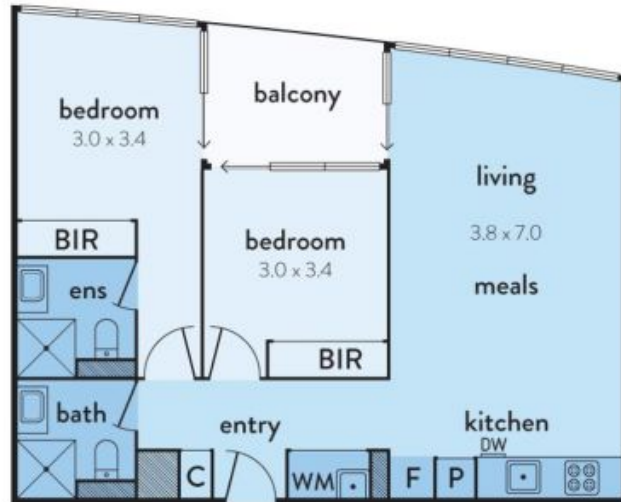
**Sold Date:** 13/06/2019

<https://www.resbymirvac.com>

# 1705/81 SOUTHWARF DRIVE, DOCKLANDS



This floorplan is an artist's impression only, it contains information that we believe to be reliable however we cannot guarantee and accept no responsibility for the accuracy of information supplied. All dimensions are indicative and listed in metres. Interested parties should take their own measurements or engage the services of a licensed surveyor.



**carspace**  
(not in position)



Plans shown are only indicative of layout. Dimensions are approximate.

**DOCKLANDS, VIC**  
1705/81 South Wharf Drive