



DOCKLANDS, VIC

2605/1 Point Park Crescent

3 BED 2 BATH 2 CAR



A Yarra Point Inspiration with amazing size and modern class

Lofty and luxurious in the Yarra Point complex, this 26th floor apartment's proportioned living spaces merge seamlessly with mesmerising outlooks. The light-filled and relaxed living and dining provides a sizeable area suited for morning breakfasts and lazing in front of the TV after a long day at work. This zone further opens out to a balcony where you can enjoy summer sunsets with wine or beer in hand.

The stone kitchen has a high end feel with luxe benchtops, island bench, and stainless steel Miele appliances. Spectacularly modern in style the stunning interior also boasts a study nook, five-star master ensuite bedroom with its own private balcony, two more bedrooms with built-in robes, a second bathroom and a separate laundry, ducted heating and cooling, secure intercom and two secure car spaces. Onsite facilities include a gymnasium, roof top herb garden, business center, library, secured bike storage room and secure visitor car park and well as access

to RekDek gym, pool, spa, steam room, and sauna.

Surrounded by green parklands, you'll love this stunning Yarra's Edge precinct close to South Wharf Promenade with restaurants and bars, local eateries including The General Assembly, Charlie Lovett, Munich Brauhaus and The Boatbuilders Yard. You're also a short walk to the DFO shopping, CBD and Southbank attractions, Crown Casino, trams, and Southern Cross Station.

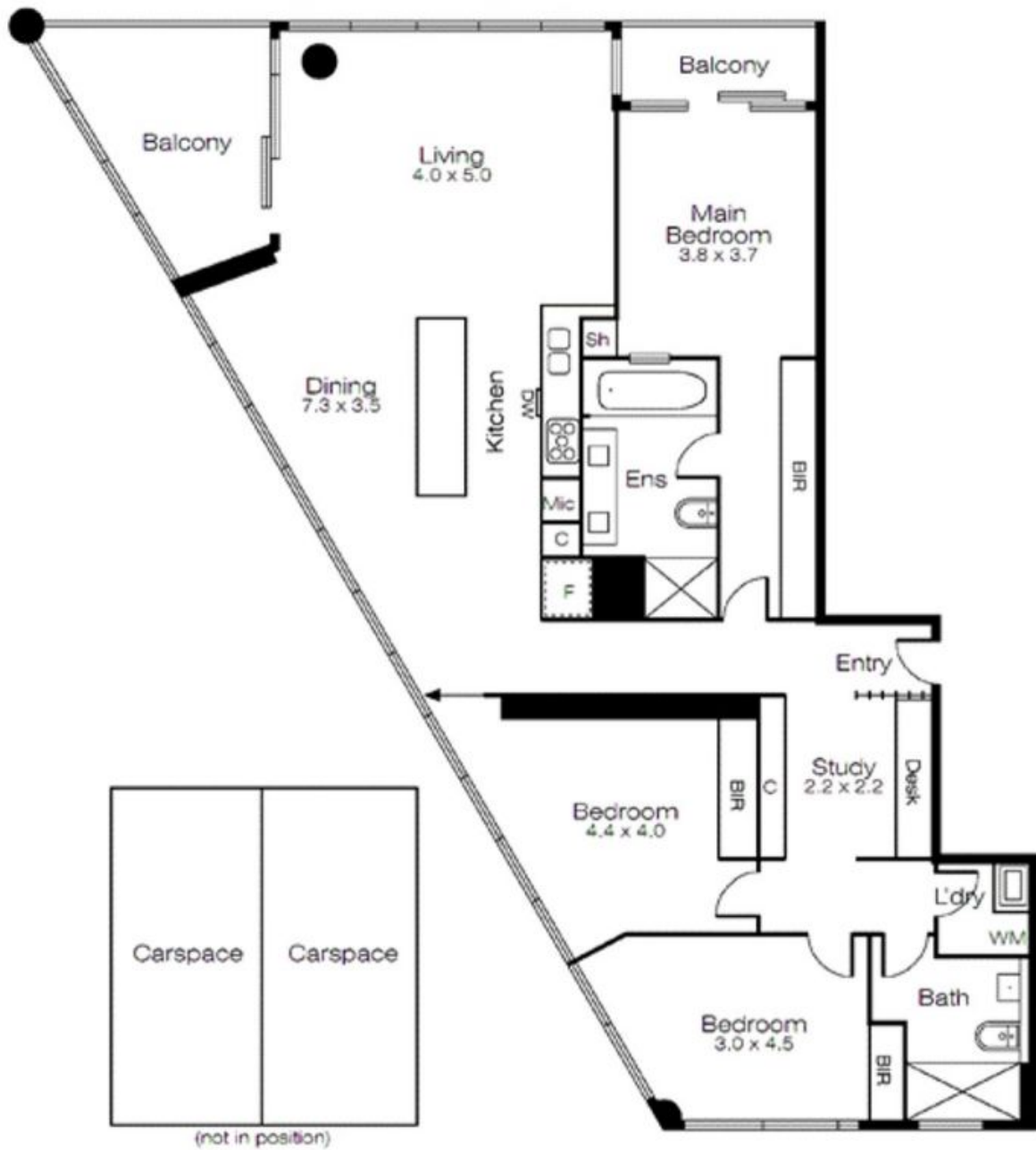
Contact Agent

Contact: Baden Lucas
03 9645 1199
0418 888 751

Type: Apartment

Sold Date: 09/04/2019

<https://www.resbymirvac.com>



0m 2m



Not to Scale

Every care has been taken to verify the accuracy of details in this brochure. Prospective purchasers are requested to take such action as is necessary to satisfy themselves of any pertinent matters.

Plans shown are only indicative of layout. Dimensions are approximate.

DOCKLANDS, VIC
2605/1 Point Park Crescent