

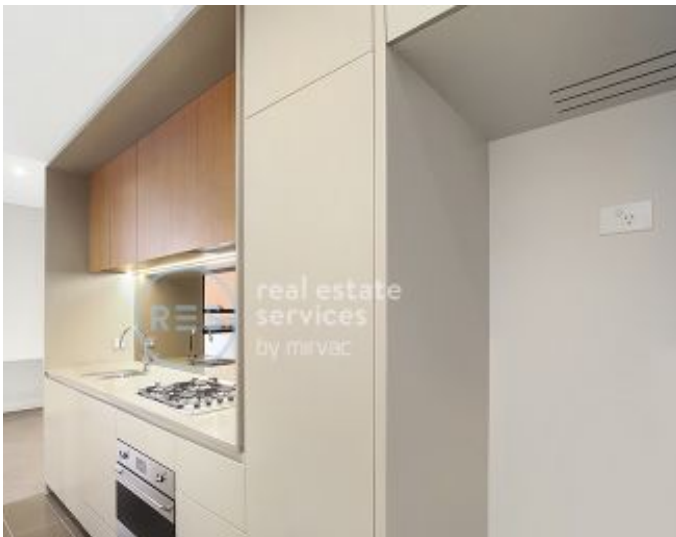
DEPOSIT TAKEN

## More apartments available for lease in Green Square - Zetland!

Please call our leasing hotline 0497 555 519 for more information



GREEN SQUARE



**ZETLAND, NSW**  
201/6 Ebsworth Street

**1**  
BATH



### DEPOSIT TAKEN!! Modern Studio Apartment near Green Square Station!

This 46sqm, Open-Plan Apartment offers:

- Modern kitchen with stone benchtop and Smeg appliances
- Open plan living and dining area
- Study nook with built-in desk
- Large bedroom with floor to ceiling built-in wardrobe
- Sleek bathroom with plenty of storage
- Internal laundry with dryer included
- Secure storage cage included
- Ducted A/C, video intercom and NBN connectivity
- Less than 300m to Woolworths, The Social Corner and Green Square Train Station

### More Apartments Available!

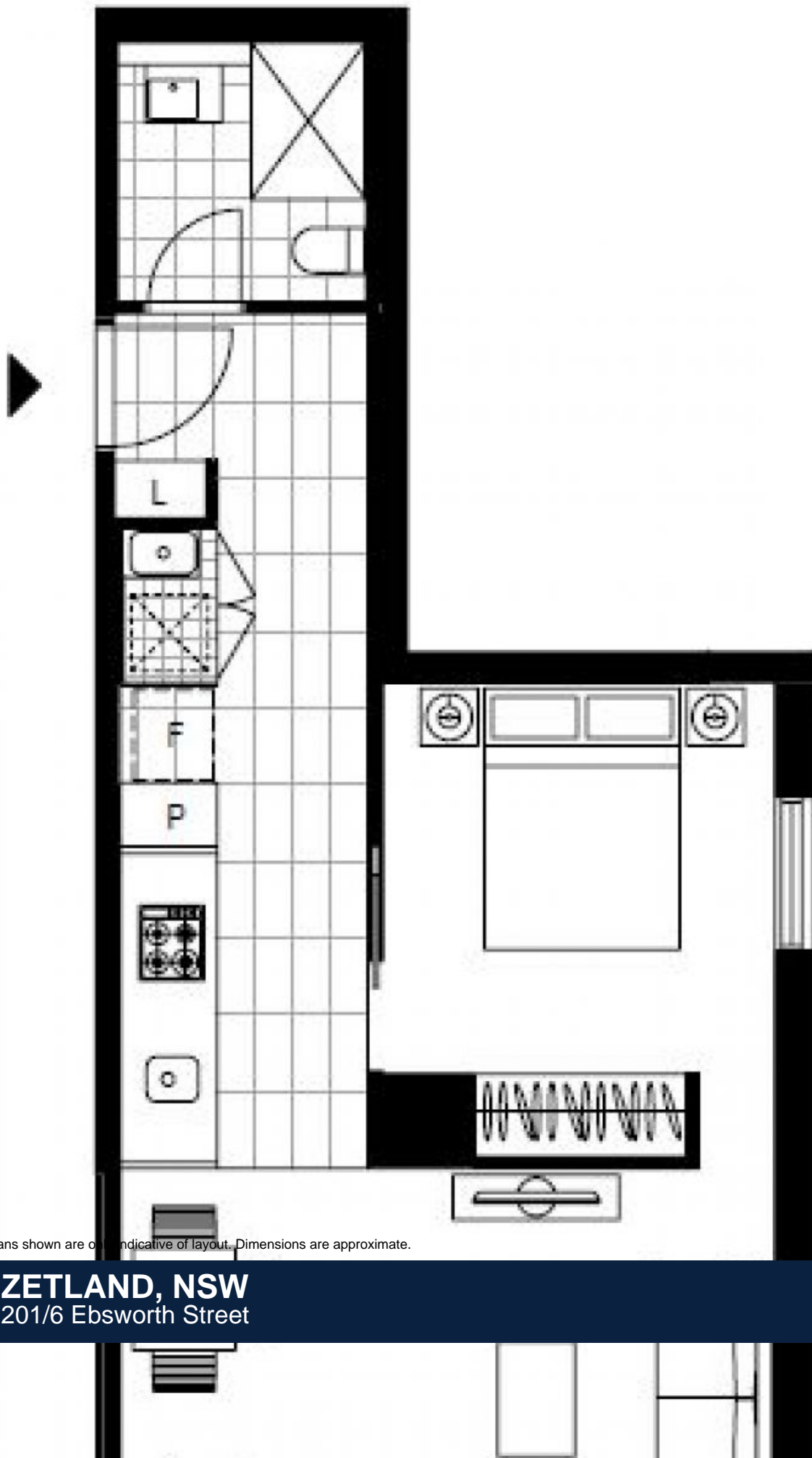
**Contact:** Carmen Whiteley  
02 8588 8888  
0497 555 519

**Type:** Studio

**Date Available:** 04/11/2020

**Bond:** \$1680

<https://www.resbymirvac.com>



Plans shown are only indicative of layout. Dimensions are approximate.

**ZETLAND, NSW**  
201/6 Ebsworth Street