



GLEBE, NSW
1309/7 Scotsman Street

2 BED **2** BATH **1** CAR 

Deposit Taken

- This 82sqm, 3rd floor 2-Bedroom Apartment features:
Garden View 2-Bedroom Apartment in Harold Park
- Large bedrooms with floor to ceiling built-in wardrobe
 - Open-plan living and dining area flowing onto balcony
 - Modern kitchen with stone benchtop and Miele appliances
 - Sleek bathrooms with vanity storage
 - North-east facing balcony
 - Internal laundry with washing machine and dryer included
 - Secure car space and storage cage included
 - Ducted A/C, video intercom and NBN connectivity
 - 450m to the Tramsheds, light rail station and public transport

images indicative only

Deposit Taken

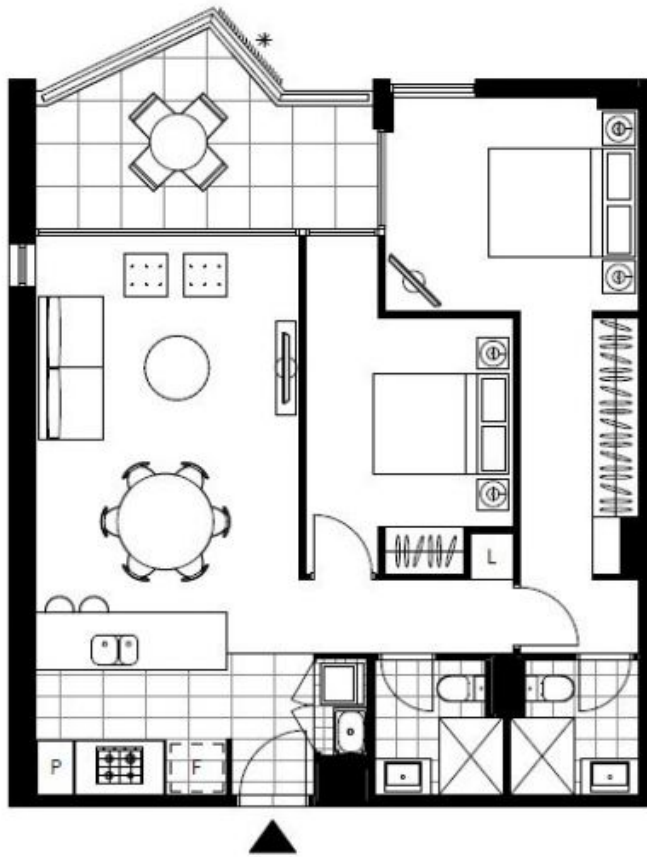
Contact: Stuart Nohra
02 8588 8888
0432 206 000

Type: Apartment

Date Available: 09/12/2019

Bond: \$3160

<https://www.resbymirvac.com>



LEVEL 3, 4, 5

Plans shown are only indicative of layout. Dimensions are approximate.

GLEBE, NSW
1309/7 Scotsman Street