



DOCKLANDS, VIC

1607/81 South Wharf Drive

1 BED 1 BATH 1 CAR RES

Luxury Waterfront Address

Forge is Melbourne's newest luxury waterfront address and we have to offer 1-bedroom apartment in the prestigious Yarra's Edge precinct.

Expansive glazing, and a closed in balcony create light-filled living environments and sweeping vistas out to Port Phillip Bay.

Boasting 56m² of living space, the apartment features:

- ? Open plan living and dining with Port Phillip Bay views
- ? Louvered balcony for year-long indoor/outdoor living
- ? Light-filled bedroom with built-in robes
- ? European Stainless-steel appliances, including dishwasher
- ? European laundry
- ? Secure parking for one vehicle

\$490pw

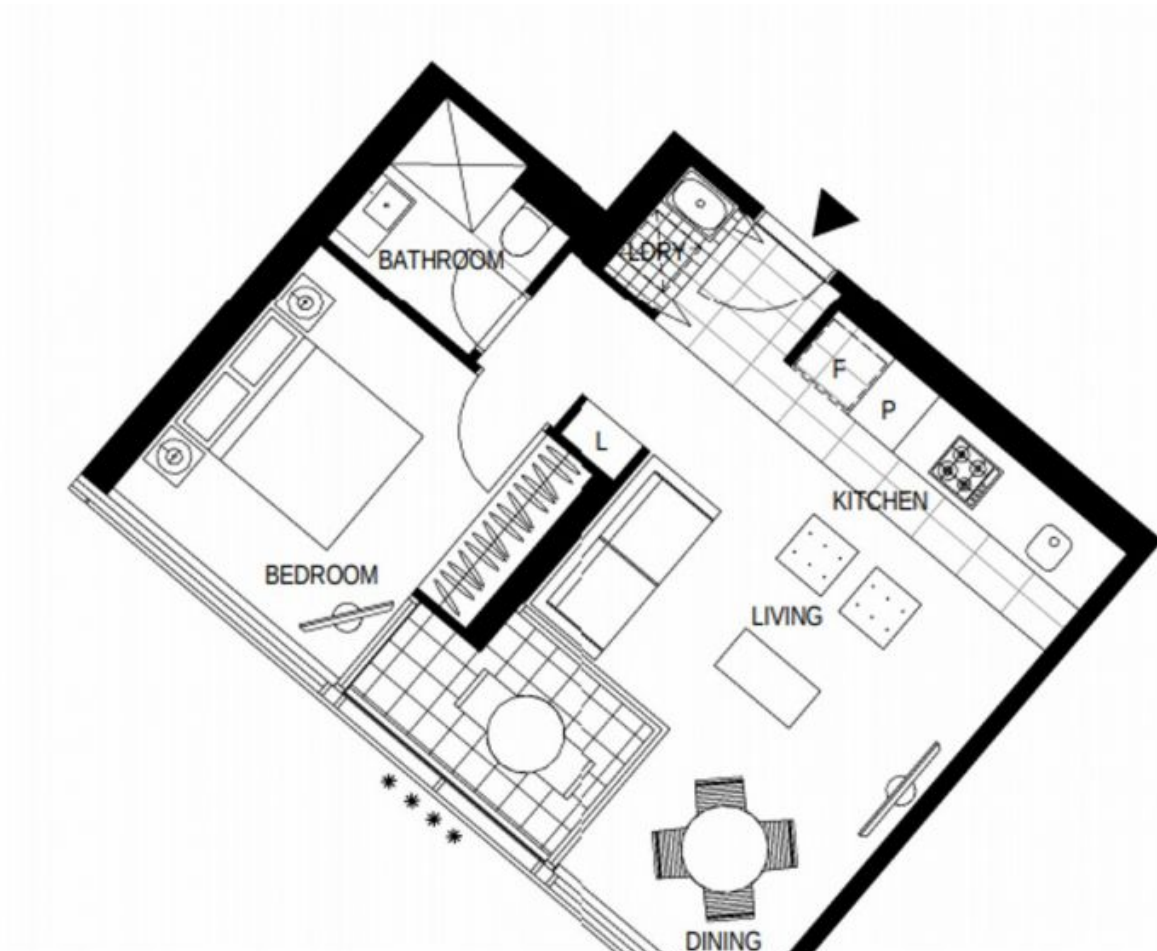
Contact: Baden Lucas
03 9645 1199
0418 888 751

Type: Apartment

Date Available: 15/02/2019

Bond: \$2940

<https://www.resbymirvac.com>



LEVEL 8, 9, 10, 11, 12, 13, 14, 15, 16, 17, 18, 19, 20, 21, 22, 23, 24

Plans shown are only indicative of layout. Dimensions are approximate.

DOCKLANDS, VIC
1607/81 South Wharf Drive