



ZETLAND, NSW

301/6 Ebsworth Street

1
BATH



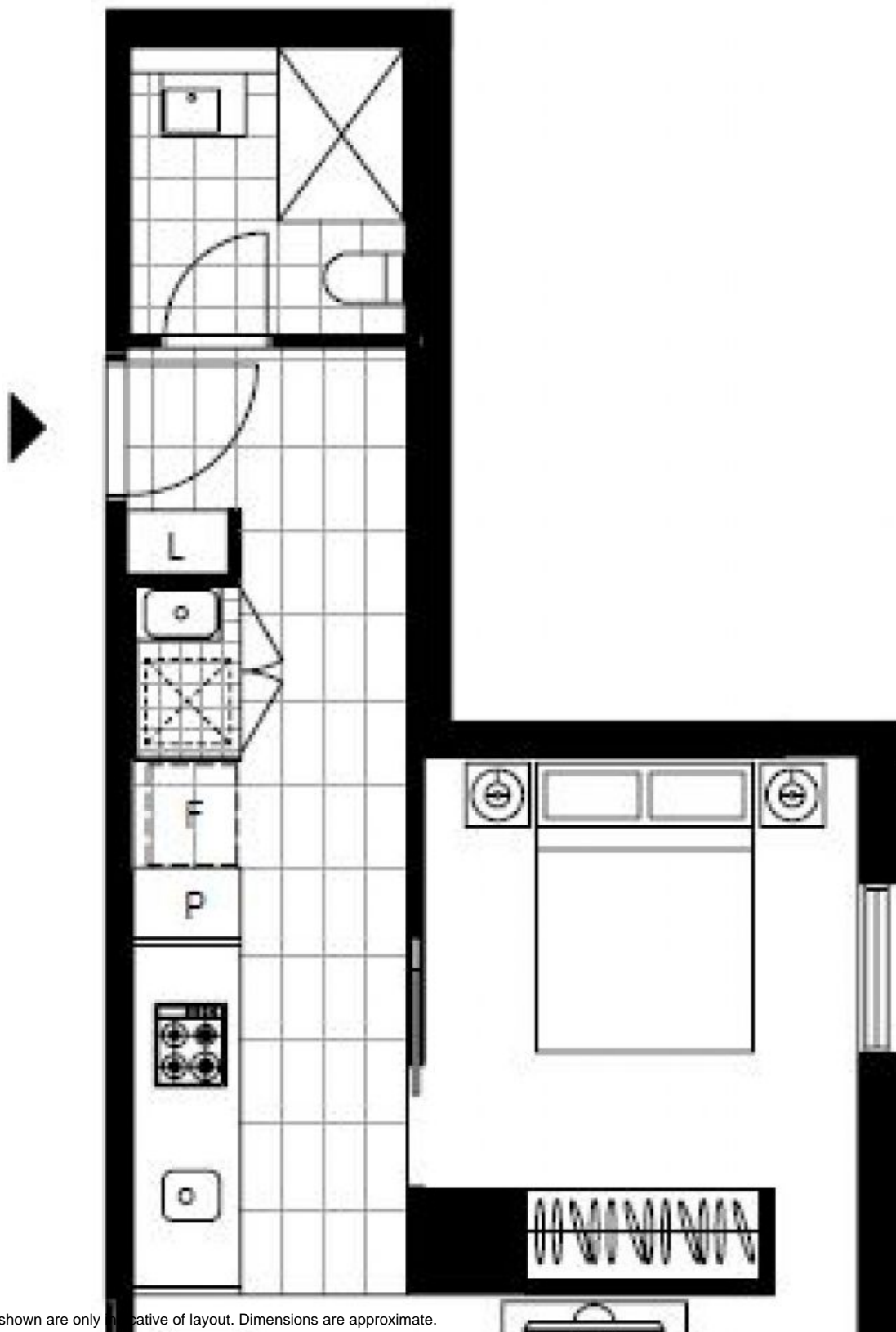
Private 1-Bedroom Apartment in Zetland

This 46sqm, 3rd Floor Studio Apartment offers:

- Modern kitchen with stone benchtop and Smeg appliances
- Open plan living and dining area
- Study nook with built-in desk, perfect for home office
- Large bedroom with floor to ceiling built-in wardrobe
- Sleek bathroom with plenty of storage
- Internal laundry with dryer included
- Secure storage cage included
- Ducted Air conditioning, video intercom and NBN connectivity
- Less than 300m to Woolworths, The Social Corner and Green Square Train Station

DEPOSIT TAKEN

Contact: Carmen Whiteley
02 8588 8888
0497 555 519
Type: Studio
Date Available: 17/03/2021
Bond: \$1760
<https://www.resbymirvac.com>



Plans shown are only indicative of layout. Dimensions are approximate.

ZETLAND, NSW
301/6 Ebsworth Street