



**DOCKLANDS, VIC**  
2705/50 Lorimer Street

**2**  
BED

**2**  
BATH

**2**  
CAR



**An elite Yarra's Edge retreat with water views that will inspire**

Relax in style in this 27th floor retreat, which has an enormous central lounge and dining zone which promises beautiful timber flooring underfoot. The wonderful designer kitchen adjoins the central living area and comes with impressive stone benches and splashback, feature island bench, and stainless steel appliances. The main zone further opens out to the balcony which has stunning Yarra River, Bolte Bridge vistas and Port Phillip Bay views.

A master bedroom includes access to its own private balcony area as well as ample built-in robes and a dazzling double vanity ensuite. The 2nd bedroom with BIRs also has entry to the main balcony. Other property features include a central bathroom, a separate laundry/storage, ducted heating and cooling throughout, secure intercom, 2 secure car spaces, a storage cage and access to RekDek incl. gym, pool, spa, steam room, and sauna. The property also has a total of 123 sqm (approx.) of space

inside and out.

In the Yarra's Edge precinct, you're close to the brilliant South Wharf Promenade which has a variety of sensational bars and restaurants plus easy access to DFO shopping. You're also a short trip to Crown Entertainment Complex, Southbank Promenade, and public transport.

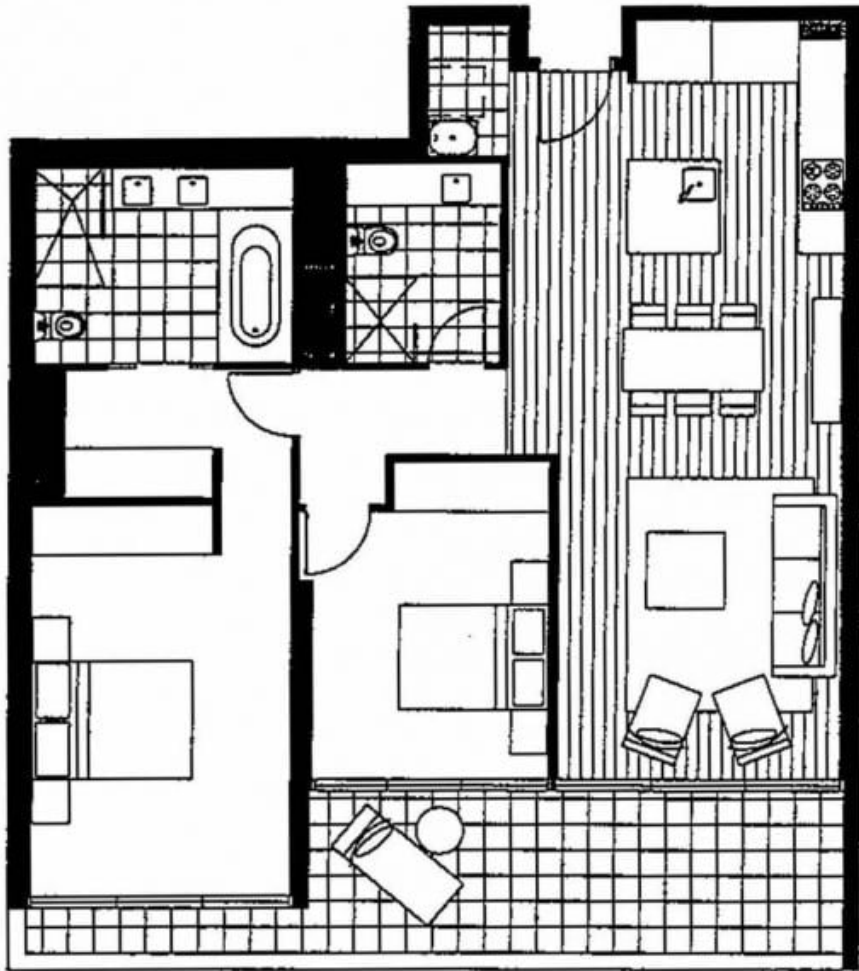
**Contact Agent**

**Contact:** Baden Lucas  
03 9645 1199  
0418 888 751

**Type:** Apartment

**Sold Date:** 01/04/2019

<https://www.resbymirvac.com>



Plans shown are only indicative of layout. Dimensions are approximate.

**DOCKLANDS, VIC**  
2705/50 Lorimer Street