



ZETLAND, NSW

1405/6 Ebsworth Street

2 **2** **1** 
BED BATH CAR

2-Bedroom Apartment with Awesome City Views in Zetland

This North-facing, 103sqm Apartment features;

- Large bedrooms with floor to ceiling built-in wardrobes
- Separate media nook with built-in desk
- Open plan living and dining area flowing onto balcony
- Modern kitchen with stone benchtops and Smeg appliances
- Sleek bathrooms with plenty of storage, ensuite with bath
- North-facing balcony with access from living and both bedrooms
- Internal laundry with dryer included
- Secure basement car space and storage cage included
- Ducted Air Conditioning, video intercom and NBN connectivity
- 300m to Woolworths, The Social Corner and Green Square Train Station

DEPOSIT TAKEN

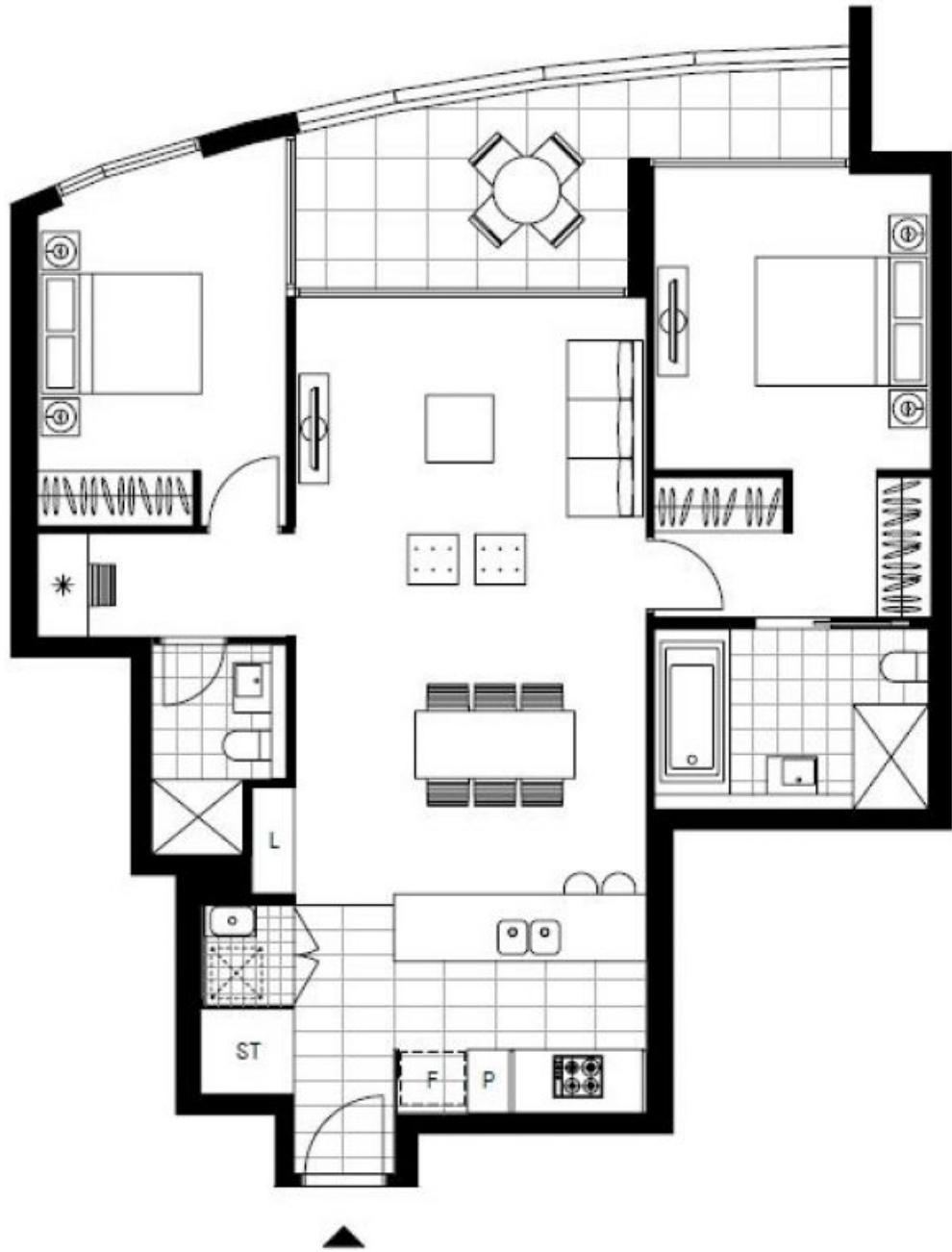
Contact: Carmen Whiteley
02 8588 8888
0497 555 519

Type: Apartment

Date Available: 21/12/2019

Bond: \$3160

<https://www.resbymirvac.com>



LEVEL 14

Plans shown are only indicative of layout. Dimensions are approximate.

ZETLAND, NSW
1405/6 Ebsworth Street